



PRICE LIST 2016

Johannesburg Branch:

104 North Reef Road
Sunny Rock, Germiston
P.O.Box 278, Isando, 1600

Telephone: +27(0)11 450 2030
Fax: +27(0)11 455 2981
E-mail: michelle.slabbert@hydroscand.co.za

Durban Branch:

Unit 5, Tilt-Up Park
Umdoni Crescent
Westmead, Durban

Telephone: +27(0)31 940 5249 / 792 1407
E-mail: shane.moodliar@hydroscand.co.za

Brits Branch:

Shop 32, Magalies Centre
Cnr Hendrik Verwoerd & De Beer Streets
Brits, 0250

Telephone: +27(0)10 593 2437 / +27 (0)12 252 0294
E-mail: jovi.cloete@hydroscand.co.za

Phalaborwa Branch:

12 Selati Street
Phalaborwa

Telephone: +27(0)15 781 0286
E-mail: david.green@hydroscand.co.za

Postal Address:

P.O. Box 278
Isando, 1600

Fax:

+27 (0)11 455 2981
+27 (0)11 450 3636
+27 (0)11 450 2083

Registration Number:

97/05304/07



Price List

Contents

Section One	3
-Hose, Fittings & Accessories	
Section Two	36
-Adaptors	
Section Three	49
- Steel & Zista Tube	
Section Four	52
-Compression Fittings & Accessories	
Section Five	68
Accessories	

An Index can be found at the beginning of each section



Section One

Hose, Fittings & Accessories

PRODUCT GROUP 100 & 110

Our wide range of high pressure hoses are suitable for applications with extremely high pressure, high impulses and high temperatures. The hoses are mainly used for hydraulic applications, high pressure washing, chemicals, gas lines and spray paint applications.

HOSE TYPES

Braided rubber hose

- Up to three braids of high tensile steel wire
- Temperature range from -55°C to +155°C
- Wide variation of covers and top coatings
- Working pressure up to 47.0 MPa

This is a very flexible hose type, suitable for almost all types of hydraulic applications.

Spiral rubber hose

- Up to six spirals of high tensile steel wire
- Temperature range from -40°C to +121°C
- Wide variation of covers and top coatings
- Working pressure up to 50.0 MPa

This hose type is designed for applications with very high pressure combined with high impulses such as hammer hydraulics.

Thermoplastic hose

- Wide variation of reinforcements
- Temperature range from -40°C to +100°C
- Good abrasion resistant covers
- Working pressure up to 80.0 MPa

This hose type has outstanding flexibility throughout the temperature range and has a low volumetric expansion, giving excellent hydraulic response times.

P.T.F.E.

- Wide variation of reinforcements
- Temperature range from -70°C to +260°C
- Extremely low frictional characteristics
- Working pressure up to 19.8 MPa
- Nonflammable

The high molecular weight structure in this type of hose provides an outstanding resistance towards a wide range of chemicals. Combined with their superior non-stick properties and wide temperature range, hoses made of P.T.F.E. are the ideal problem-solvers for virtually all aggressive applications.

RECOMMENDED FLUIDS

Synthetic oil resistant rubber

This inner tube is suitable for fluids such as mineral oil, vegetable oils and synthetic ester-based oil (up to 100°C), glycols and polyglycols, mineral oils in aqueous emulsion, hydrocarbons, water etc.

Polyester

This inner tube is suitable for fluids such as hydraulic oil, grease, fuel oils, mineral oils, most phosphate esters and water. It's also suitable for many industrial gases such as Heliox (max 25% O₂), Argon, Nitrogen, carbon dioxide, Helium and air.

Polyamide

This inner tube offers optimal resistance to a wide range of fluids such as paints, chlorinated solvents and other chemicals.

P.T.F.E.

The P.T.F.E. inner tube is resistant to all chemicals and solvents except molten alkali metals and fluorine gas.

ABBREVIATIONS

- CO** Hose type to be used in hard conditions. The cover is resistant to abrasion, ozone and flames.
- XA** Hose type to be used in severe environmental conditions. With a polymer cover with extra outstanding abrasion and ozone resistance.
- PO** Hose type to be used in arctic environments. Excellent flexibility throughout the temperature range.

Section One

Hose, Fittings & Accessories Index

Description: HOSE	Page:-
EGEFLEX 1 CO	5
EGEFLEX 2 CO	5
DELTAFLX 4 CT	6
GAMMA FLEX	6
ISOBAR 42 CO / ISOBAR 35 CO	7
ISOBAR 42 CO 1142-14	7
HI TEMP	8
EDGEFLEX 2 HT	8
KAPPAFLEX 2K CO ROCK	9
HYDROSCAND T1111	9
HYDROSCAND T1211	10
HYDROSCAND T3211	10
HYDROSCAND T1112, TWIN	11
HYDROSCAND T7011	11
HYDROSCAND T8081	12
HYDROSCAND SUPERTWIN T7012, TWIN	12
HYDROSCAND T1121, PAINT SPRAY HOSE	13
HYDROSCAND T1221, PAINT SPRAY HOSE	13
P.T.F.E. HOSE	14
P.T.F.E. HOSE, CONVOLUTED	14
PUSHLOCK LOW PRESSURE AIR - INSTAGRIP	15
SPIRAL GUARD WRAP	15

Description: FITTINGS	Page:-
Ferrules	16-17
BSP Fittings	18-20
JIC Fittings	21-22
ORFS Fittings	23
Metric Female, Male, Standpipe & NPTF Male Fittings	24-26
Komatsu, Joiners, Blank Tails, Powerwash & SAE	27
Code 61 Flanges	28
Code 62 Flanges	29
Interlock Fittings	30
Quick Release Coupling	31
Hose Protectors Spiral Guard	31
Washers	32

1101-14 EGEFLEX 1 CO



Construction

Inner tube:	Synthetic oil resistant rubber
Cover:	Weather and oil resistant rubber
Reinforcement:	One braid of steel wire
Safety factor:	4:1
Temperature:	-40°C – +100°C
Design:	Blue label, wrapped



Applications/Characteristics

Ozone resistant hose for applications with medium/high pressures and much external abrasion. Equivalent to EN 853 1SN (25.0–4.0 MPa). The hose is approved by MSHA (flame resistant).

Ferrule:	4200-11-xx, 4200-21-xx (3/16"–1"), 4200-23-xx (1"–2")
Product group:	100

Part number	ID mm	ID inch	OD mm	Work pr. MPa	Bend rad. mm	Weight kg/m	Sugg. RETAIL
1101-14-04	6.5	1/4"	13.4	22.5	100	0.21	63.66
1101-14-06	10.0	3/8"	17.4	18.0	125	0.33	86.38
1101-14-08	13.0	1/2"	20.6	16.0	180	0.41	87.66
1101-14-10	16.0	5/8"	23.7	13.0	200	0.45	136.60
1101-14-12	19.0	3/4"	27.7	10.5	240	0.58	140.79
1101-14-16	25.0	1"	35.6	8.8	300	0.88	232.78
1101-14-20	32.0	1 1/4"	43.5	6.3	420	1.23	323.92
1101-14-24	38.0	1 1/2"	50.6	5.0	500	1.51	421.15
1101-14-32	51.0	2"	64.0	4.0	630	1.97	533.04

1102-14 EGEFLEX 2 CO



Construction

Inner tube:	Synthetic oil resistant rubber
Cover:	Abrasion, weather and heat resistant synthetic rubber
Reinforcement:	Two braids of steel wire
Safety factor:	4:1
Temperature:	-40°C – +100°C
Design:	Orange label, wrapped



Applications/Characteristics

A hose for applications with medium to high pressures and a lot of external abrasion. Equivalent to EN 853 2SN. Approved by MSHA (flame resistant). The certificates refer to dimensions 3/16" – 1".

Ferrule:	4200-12-xx, 4200-22-xx, 4200-23-xx
Product group:	100

Part number	ID mm	ID inch	OD mm	Work pr. MPa	Bend rad. mm	Weight kg/m	Sugg. RETAIL
1102-14-04	6.5	1/4"	15.0	40.0	100	0.33	96.30
1102-14-05	8.0	5/16"	16.6	35.0	115	0.39	91.13
1102-14-06	9.5	3/8"	19.0	33.0	130	0.50	123.21
1102-14-08	13.0	1/2"	22.2	27.5	180	0.59	140.28
1102-14-10	16.0	5/8"	25.4	25.0	200	0.71	174.11
1102-14-12	19.0	3/4"	29.3	21.5	240	0.86	205.24
1102-14-16	25.0	1"	38.1	16.5	300	1.28	268.58
1102-14-20	32.0	1 1/4"	48.3	12.5	420	2.04	426.29
1102-14-24	38.0	1 1/2"	54.6	9.0	500	2.27	555.45
1102-14-32	51.0	2"	67.0	8.0	630	2.87	736.14

1115-10 DELTALEX 4 CT

MSHA



Construction

Inner tube:	Synthetic oil resistant rubber
Cover:	Weather and oil resistant rubber
Reinforcement:	Four spirals of steel wire
Safety factor:	4:1
Temperature:	-40°C – +121°C
Design:	Yellow marking, wrapped

Applications/Characteristics

The hose is equivalent to EN 856 4SH and approved by MSHA (flame resistant).

Ferrule:	4200-19-xx, 4200-20-xx, 4400-09-xx
Product group:	110

Pulsating pressure hydraulic applications which operate at temperatures up to 121 ° C

Part number	ID mm	ID inch	OD mm	Work pr. MPa	Bend rad. mm	Weight kg/m	Sugg. RETAIL
1115-10-06	10.0	3/8"	21.4	44.5	130	0.78	277.31
1115-10-08	13.0	1/2"	24.6	42.5	180	0.93	299.10
1115-10-10	16.0	5/8"	28.2	39.0	225	1.17	364.46
1115-10-12	19.0	3/4"	32.2	35.0	280	1.48	384.81
1115-10-16	25.0	1"	39.7	32.0	340	2.02	504.13
1115-02-20	32.0	1 1/4"	45.5	34.5	460	2.46	712.59
1115-02-24	38.0	1 1/2"	53.5	29.0	560	3.35	836.51
1115-02-32	51.0	2"	68.1	25.0	700	4.55	1097.34

1118-02 GAMMA FLEX

MSHA



Construction

Inner tube:	Synthetic oil resistant rubber
Cover:	Weather and oil resistant rubber
Reinforcement:	Four spirals of steel wire
Safety factor:	4:1
Temperature:	-40°C – +100°C
Design:	Yellow marking, wrapped

Applications/Characteristics

The hose is equivalent to EN 856 4SH and approved by MSHA (flame resistant).

Ferrule:	4200-19-xx, 4200-20-xx, 4400-09-xx
Product group:	110

Part number	ID mm	ID inch	OD mm	Work pr. MPa	Bend rad. mm	Weight kg/m	Sugg. RETAIL
1118-02-16	25.0	1"	38.4	38.0	340	2.14	604.68
1118-02-20	32.0	1 1/4"	45.2	32.5	460	2.49	858.04
1118-02-24	38.0	1 1/2"	53.5	29.0	560	3.38	902.05

1142-14 ISOBAR 42 CO / 1135-14 ISOBAR 35 CO



Construction

Inner tube: Synthetic oil resistant rubber
 Cover: Synthetic abrasion, weather and heat resistant rubber
 Reinforcement: ID 19-25: Four spirals of steel wire
 ID 32-51: Six spirals of steel wire
 Safety factor: 4:1
 Temperature: -40°C – +121°C
 Design: Red, black and white marking, wrapped

Applications/Characteristics

The hose is suitable for very high pressures in combination with very high impulses and a lot of external abrasion. The hose is MSHA approved (flame resistant). ID 3/4" – 1 1/2" is equivalent to, or exceeds, SAE 100 R15. ID 2" is equivalent to, or exceeds, SAE 100 R13.

Ferrule: 4400-09-xx, 4400-13-xx, 4400-14-xx
 Product group: 110

Part number	ID mm	ID inch	OD mm	Work pr. MPa	Bend rad. mm	Weight kg/m	Sugg RETAIL
1142-14-16	25.0	1"	38.7	42.0	330	2.10	757.90
1135-13-32	51.0	2"	70.5	42.0	650	7.09	2295.81

The hose is also available in XA-design.

1142-14 ISOBAR 42 CO



Construction

Inner tube: Synthetic oil resistant rubber
 Cover: Synthetic abrasion, weather and heat resistant rubber
 Reinforcement: ID 19-25: Four spirals of steel wire
 ID 32-38: Six spirals of steel wire
 Safety factor: 4:1
 Temperature: -40°C - +121°C
 Design: Wrapped, red and white lables

Applications/Characteristics

The hose is suitable for very high pressures in combination with very high impulses and a lot of external abrasion. The hose is MSHA approved (flame resistant). ID 3/4" - 1 1/2" is equivalent tom or exceeds, SAE 100 R15.

Ferrule: 4400-09-xx, 4400-14-xx
 Product group: 110

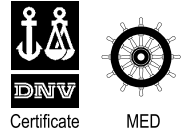
Part number	ID mm	ID inch	OD mm	Work pr. MPa	Bend rad. mm	Weight kg/m	Sugg. RETAIL
1142-13-20	32.0	1 1/4"	49.3	42.0	445	3.65	1524.04
1142-13-24	38.0	1 1/2"	57.3	42.0	530	5.00	1945.06

1071 HI-TEMP



Construction

Inner tube:	Synthetic oil and heat resistant rubber
Cover:	Synthetic abrasion resistant rubber
Reinforcement:	One braid of steel wire
Safety factor:	4:1
Temperature:	-40°C – +150°C
Design:	Wrapped, white text



Applications/Characteristics

The hose is suitable for hydraulic pipes, truck engines, transportation of oil and gasoline with extra high temperature. It is also available in pin-pricked design for compressor applications.

Ferrule:	4200-21-xx, 4200-23-xx
Product group:	110

Part number	ID mm	ID inch	OD mm	Work pr. MPa	Bend rad. mm	Weight kg/m	Sugg. RETAIL
1071-00-04	6.4	1/4"	13.4	22.5	100	0.21	54.42
1071-00-06	9.5	3/8"	17.4	18.0	130	0.33	98.75
1071-00-08	12.7	1/2"	20.6	16.0	180	0.41	136.85
1071-00-10	15.9	5/8"	23.7	13.0	200	0.45	149.19
1071-00-12	19.1	3/4"	27.7	10.5	240	0.58	178.19
1071-00-16	25.4	1"	35.6	8.8	300	0.88	598.86

1102-52 EGEFLEX 2 HT



Construction

Inner tube:	Synthetic oil resistant rubber
Cover:	Weather- and oil resistant rubber
Reinforcement:	Two braids of steel wire
Safety factor:	4:1
Temperature:	-40°C - +150°C
Design:	Blue, Wrapped

Applications/Characteristics

The hose is suitable for high pressure lines for oil, fuel or lubrication systems with extra high temperature. Equivalent to EN 853 2SN.

Ferrule:	4200-22-xx, 4200-23-xx
Product group:	100

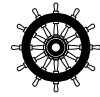
Part number	ID mm	ID inch	OD mm	Work pr. MPa	Bend rad. mm	Weight kg/m	Sugg. RETAIL
1102-52-04	6,5	1/4"	15.2	40.0	100	0.40	131.72
1102-52-06	10,0	3/8"	19.1	35.0	130	0.60	170.11
1102-52-08	13,0	1/2"	22.1	29.7	180	0.68	204.96
1102-52-12	19,0	3/4"	29.5	21.0	240	1.00	317.27
1102-52-16	25,0	1"	37.9	17.5	300	1.44	483.43
1102-52-20	32,0	1 1/4"	48.8	15.7	420	2.39	708.95
1102-52-24	38,0	1 1/2"	54.6	12.2	500	2.60	771.70
1102-52-32	51,0	2"	67.8	10.5	630	3.38	1199.13

1105-63 KAPPAFLEX 2KCO ROCK



Construction

Inner tube:	Synthetic oil resistant rubber
Cover:	Durable; weather and oil resistant rubber
Reinforcement:	Two braids of compact steel wire
Safety factor:	1:4
Temperature:	-40°C – +100°C
Design:	Green label, wrapped



MED



Applications/Characteristics

Ozone resistant hose for applications with high pressures and high abrasion. Well suited for marine applications. Impuls tested up to one million cycles. (1 1/4" to 200 000 cycles). Exceeds EN 857 2SC. DNV-, MED- and MSHA-approved.

Ferrule:	4200-11-xx, 4200-23-xx
Product group:	100

Part number	ID mm	ID inch	OD mm	Work pr. MPa	Bend rad. mm	Weight kg/m	Sugg. RETAIL
1105-63-04	6.5	1/4"	13.4	45.0	45	0.29	85.93
1105-63-05	8.0	5/16"	15.0	42.0	60	0.34	89.21
1105-63-06	10.0	3/8"	17.4	38.5	70	0.44	136.11
1105-63-08	13.0	1/2"	20.6	34.5	90	0.54	155.46
1105-63-10	16.0	5/8"	23.7	29.0	130	0.63	194.45
1105-63-12	19.0	3/4"	27.7	28.0	160	0.84	233.48
1105-63-16	25.0	1"	35.6	20.0	210	1.14	337.15
1105-63-20	32.0	1 1/4"	43.5	17.5	300	1.52	441.29

1031-01 HYDROSCAND T1111



Construction

Inner tube:	Seamless polyester elastomer
Cover:	Oil, weather and abrasion resistant polyurethane
Reinforcement:	One braid of steel wire
Safety factor:	4:1
Temperature:	-40°C – +100°C, air and water max +70°C
Design:	Black cover, pin-pricked

Applications/Characteristics

The hose is well suitable for high pressure hydraulics, high pressure gas applications as well as pressure washers. Due to the inner tube of polyester, the hose will retain its flexibility in cold temperatures.

Ferrule:	4200-28-xx
Product group:	

Part number	ID mm	ID inch	OD mm	Work pr. MPa	Bend rad. mm	Weight kg/m	Sugg. RETAIL
1031-01-04	6.5	1/4"	11.7	31.0	40	0.15	102.81
1031-01-05	8.0	5/16"	13.2	25.0	55	0.19	90.76
1031-01-06	10.0	3/8"	16.5	22.5	65	0.22	109.15
1031-01-08	13.0	1/2"	18.8	19.0	85	0.29	163.66
1031-01-10	16.0	5/8"	22.0	14.0	115	0.33	168.48

1034-01**HYDROSCAND T1211****Construction**

Inner tube: Seamless polyester elastomer
 Cover: Oil and abrasion resistant polyurethane
 Reinforcement: Two braids of steel wire
 Safety factor: 4:1
 Temperature: -40°C – +100°C, air and water max +70°C
 Design: Black cover, pin-pricked

Applications/Characteristics

This hose is well suited for high pressure hydraulics and high pressure gas applications. Due to the inner tube of polyester, the hose will retain its flexibility in cold temperatures.

Ferrule: 4200-29-xx
 Product group: 110

Part number	ID mm	ID inch	OD mm	Work pr. MPa	Bend rad. mm	Weight kg/m	Sugg. RETAIL
1034-01-08	13.0	1/2"	20.2	26.0	85	0.45	289.37
1034-01-10	16.0	5/8"	23.5	22.0	115	0.56	392.40
1034-01-12	19.0	3/4"	27.5	15.0	170	0.70	467.42

1058-01HYDROSCAND T3211**Construction**

Inner tube: Polyester elastomer
 Cover: Oil and abrasion resistant polyurethane, pin-pricked
 Reinforcement: One or two braids of aramid (Kelvar®) and one braid of steel wire
 Safety factor: 4:1
 Temperature: -40°C – +100°C, water max +70°C
 Design: Black cover

Applications/Characteristics

This hose is suited for hydraulics with very high pressures, e.g. high pressure pumps and heavy duty applications. Due to the inner tube of polyester, the hose will retain its flexibility in cold temperatures.

Product group: 110

Part number	ID mm	ID inch	OD mm	Work pr. MPa	Bend rad. mm	Weight kg/m	Sugg. RETAIL
1058-01-04	6.6	1/4"	12.7	70.0	35	0.19	259.81
1058-01-04G	6.6	1/4"	12.7	70.0	35	0.19	247.31
1058-01-06	10.0	3/8"	18.0	70.0	90	0.21	536.49

1032 HYDROSCAND T1112, TWIN



Cover: Seamless polyester elastomer
 Oil, weather and abrasion resistant polyurethane
 Reinforcement: One braid of steel wire
 Safety factor: 4:1
 Temperature: -40°C – +100°C, air and water max +70°C
 Design: Supertwin, black cover, pin-pricked

Applications/Characteristics

The hose is well suitable for high pressure hydraulics, high pressure gas applications as well as pressure washers. Due to the inner tube of polyester, the hose will retain its flexibility in cold temperatures.

Ferrule: 4200-28-xx
 Product group: 110

Part number	ID mm	ID inch	OD mm	Work pr. MPa	Bend rad. mm	Weight kg/m	Sugg. RETAIL
1032-04-04	6.5	1/4"	11.7	31.0	40	0.30	189.92
1032-06-06	10.0	3/8"	16.5	22.5	65	0.44	284.98
1032-08-08	13.0	1/2"	18.8	19.0	85	0.58	345.91

1045-01 HYDROSCAND T7011



Construction

Inner tube: Polyester elastomer
 Cover: Oil and abrasion resistant polyurethane
 Reinforcement: One braid of polyester
 Safety factor: 4:1
 Temperature: -40°C – +100°C, air and water max +70°C
 Design: Black cover, pin-pricked

Applications/Characteristics

This hose is well suited for hydraulics, grease gun systems and gas applications. Due to the inner tube of polyester, the hose will retain its flexibility in cold temperatures. Equivalent to SAE 100 R7.

Ferrule: 4200-27-xx
 Product group: 110

Part number	ID mm	ID inch	OD mm	Work pr. MPa	Bend rad. mm	Weight kg/m	Sugg. RETAIL
1045-01-04	6.5	1/4"	12.2	21.0	35	0.10	72.07
1045-01-06	10.0	3/8"	16.0	16.0	55	0.15	119.43
1045-01-08	13.0	1/2"	20.3	14.0	75	0.22	142.90
1045-01-12	19.0	3/4"	27.1	9.0	140	0.33	170.32

1059-01HYDROSCAND T8081



Construction

Inner tube: Polyester elastomer
 Cover: Polyurethane
 Reinforcement: One braid of aramid (Kelvar®)
 Safety factor: 4:1
 Temperature: -40°C – +100°C, air and water max +70°C
 Design: Orange cover, pin-pricked

Applications/Characteristics

This hose is well suited for high pressure hydraulics and high pressure lines. Due to the inner tube of polyester, the hose will retain its flexibility in cold temperatures. Equivalent to SAE 100 R7.

Ferrule: 4200-27-xx, 4200-28-08 (1/2" only)
 Product group: 110

Part number	ID mm	ID inch	OD mm	Work pr. MPa	Bend rad. mm	Weight kg/m	Sugg. RETAIL
1059-01-04	6.5	1/4"	11.5	35.0	50	0.08	170.42
1059-01-06	10.0	3/8"	15.5	28.0	60	0.13	244.86
1059-01-08	13.0	1/2"	19.9	24.5	80	0.20	344.97
1059-01-12	19.0	3/4"	26.9	16.5	150	0.32	390.98
1059-01-16	25.0	1"	34.2	14.0	200	0.44	735.28

1047 HYDROSCAND SUPERTWIN T7012, TWIN



Construction

Inner tube: Polyester elastomer
 Cover: Oil and abrasion resistant polyurethane
 Reinforcement: One braid of polyester
 Safety factor: 4:1
 Temperature: -40°C – +100°C, air and water max +70°C
 Design: Supertwin, pin-pricked

Applications/Characteristics

This hose is well suited for hydraulics and gas applications. The hose retains its flexibility in cold temperatures. Equivalent to SAE 100 R7.

Ferrule: 4200-27-xx
 Product group: 110

Part number	ID mm	ID inch	OD mm	Work pr. MPa	Bend rad. mm	Weight kg/m	Sugg. RETAIL
1047-04-04	6.5	1/4"	12.2	21.0	35	0.19	142.03
1047-06-06	10.0	3/8"	16.0	16.0	55	0.29	207.41

1037-01HYDROSCAND T1121, PAINT SPRAY HOSE



Construction

Inner tube:	Seamless polyamide
Cover:	Polyurethane
Reinforcement:	One braid of steel wire
Safety factor:	4:1
Temperature:	-40°C – +100°C, air and water max +70°C
Design:	Blue cover

Applications/Characteristics

The hose is well suitable for spray paint applications, dissolvents and other chemicals. The steel reinforcement provides electrical conductivity through the hose. Should be checked after mounting the fittings.

Ferrule:	4200-28-xx
Product group:	110

Part number	ID mm	ID inch	OD mm	Work pr. MPa	Bend rad. mm	Weight kg/m	Sugg. RETAIL
1037-01-03	5.0	3/16"	9.7	36.0	30	0.11	97.46
1037-01-04	6.5	1/4"	11.7	31.0	40	0.15	116.06
1037-01-06	10.0	3/8"	16.5	22.5	65	0.22	144.99
1037-01-08	13.0	1/2"	18.8	19.0	85	0.29	179.63

1038-01HYDROSCAND T1221, PAINT SPRAY HOSE



	Seamless polyamide / Nylon 6
Cover:	Polyurethane
Reinforcement:	Two braids of steel wire
Safety factor:	4:1
Temperature:	-40°C – +100°C, air and water max +70°C
Design:	Blue cover, pin-pricked

Applications/Characteristics

Paint spray hose for high pressures. It is well suitable for spray paint applications, dissolvents and other chemicals. The steel reinforcement provides electrical conductivity through the hose. Should be checked after mounting the fittings.

Ferrule:	4200-29-xx
Product group:	

Part number	ID mm	ID inch	OD mm	Work pr. MPa	Bend rad. mm	Weight kg/m	Sugg. RETAIL
1038-01-04	6.5	1/4"	12.8	40.0	40	0.25	161.77
1038-01-06	10.0	3/8"	16.8	33.0	65	0.38	237.30
1038-01-08	13.0	1/2"	20.2	26.0	85	0.45	271.40

1092-01 P.T.F.E HOSE



Construction

Inner tube: Smooth P.T.F.E. (Teflon®)
 Reinforcement: One braid of stainless steel wire
 Safety factor: 4:1
 Temperature: -60°C – +260°C

Applications/Characteristics

A very suitable hose for hazardous environments together with dissolvents, paint, hydraulic oils, food as well as other applications where high temperature, high pressure and resistance towards chemicals are needed along with elastic characteristics. Age resistant.

Ferrule: 4200-26-xx
 Product group: 110

Part number	ID nom mm	ID inch	OD nom mm	WP MPa	Bend rad. mm	Sugg. RETAIL
1092-01-03	5.1	3/16"	8.1	19.8	64	184.62
1092-01-04	6.7	1/4"	9.4	16.8	76	210.62
1092-01-06	10.0	3/8"	12.7	13.8	127	308.35
1092-01-08	13.2	1/2"	16.6	12.1	152	445.86
1092-01-10	16.6	5/8"	19.8	8.6	178	512.38
1092-01-12	19.8	3/4"	23.0	7.8	203	590.72
1092-01-16	26.1	1"	29.3	6.0	305	489.16

1091 P.T.F.E. HOSE, CONVOLUTED



Construction

Inner tube: Convoluted P.T.F.E. (Teflon®)
 Reinforcement: One braid of stainless steel wire, SS 2330
 Safety factor: 4:1
 Temperature: -70°C – +230°C

Applications/Characteristics

A very flexible high pressure hose due to the convoluted inner tube. The hose is suitable for most hazardous environments. Large chemical resistance range, low friction and wide temperature range. Age resistant.

Ferrule: 4200-30-xx, 3800-30-xx
 Product group: 110

Part number	ID nom mm	ID inch	OD nom mm	WP MPa	Bend rad. mm	Sugg. RETAIL
1091-00-06	9.5	3/8"	15.5	11.2	20	510.46
1091-00-08	12.7	1/2"	17.7	7.8	25	648.73
1091-00-10	15.9	5/8"	22.1	6.8	50	798.85
1091-00-12	19.0	3/4"	24.6	5.2	65	731.76
1091-00-16	25.5	1"	30.7	3.5	90	1276.02

PUSHLOCK LOW PRESSURE AIR - INSTAGRIP (BLACK) HOSE



HOSE TYPE	NOMINAL I.D.	Sugg. RETAIL
SH9272-04	1/4"	46.64
701-05	5/16"	67.11
SH9272-06	3/8"	71.83
SH9272-08	1/2"	97.50
SH9272-10	5/8"	130.93
SH9272-12	3/4"	158.14
701-16	1"	213.23

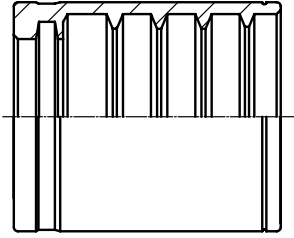
SPIRAL GUARD WRAP

BLACK



PART NO.	1 WIRE	2 WIRE	MULTI SPIRAL	Sugg RETAIL
SGX-16	-04	-04	-04	45.45
SGX-20	-06	-06	-06	59.46
SGX-25	-08	-08	-08	75.96
SGX-32	-12	-10	-12	112.39
SGX-40	-16	-16	-16	146.97
SGX-50	-20	-20	-20	217.06
SGX-63		-24	-24	307.91
SGX-75		-32	-32	383.70
SGX-90				453.97
SGX-110				625.19

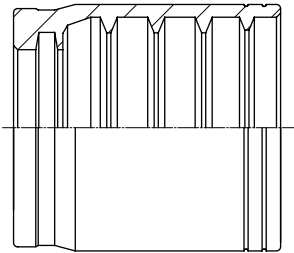
NON-SKIVED SWAGED FERRULE



1WIRE COLLARS

NOMINAL HOSE BORE			PART NUMBER	Sugg RETAIL
mm	in	dash		
6	1/4	04	42001104	9.97
10	3/8	06	42001106	14.27
12	1/2	08	42001108	18.79
16	5/8	10	42001110	32.18
19	3/4	12	42001112	43.16
25	1	16	42001116	82.51
31	1-1/4	20	52001120	135.52
38	1-1/2	24	42001124	218.06
51	2	32	42001132	446.19

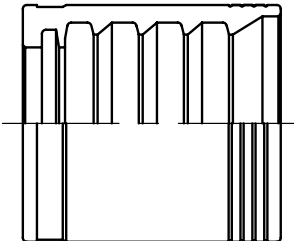
SKIVED SWAGED FERRULE



2WIRE COLLARS

NOMINAL HOSE BORE			PART NUMBER	Sugg RETAIL
mm	in	dash		
6	1/4	04	42001204	14.36
10	3/8	06	42001206	19.07
12	1/2	08	42001208	25.46
16	5/8	10	42001210	36.00
19	3/4	12	42001212	46.32
25	1	16	42001216	84.76
31	1-1/4	20	42001220	181.18
38	1-1/2	24	42001224	330.18
51	2	32	42001232	428.50

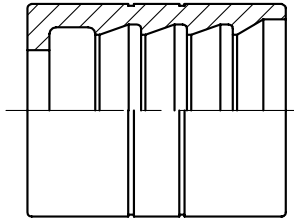
NONSKIVED SWAGED FERRULE



4SP COLLARS

NOMINAL HOSE BORE			PART NUMBER	Sugg RETAIL
mm	in	dash		
10	3/8	06	42001906	25.15
12	1/2	08	42001908	33.57
16	5/8	10	42001910	45.95
19	3/4	12	42001912	55.59
25	1	16	42001916	98.96
31	1-1/4	20	42001920	196.49
38	1-1/2	24	42001924	303.53
51	2	32	42001932	495.59

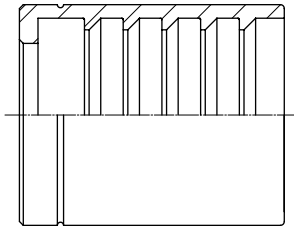
SWAGED FERRULE



THERMOPLASTIC COLLAR 1 WIRE

NOMINAL HOSE BORE			PART NUMBER	Sugg RETAIL
mm	in	dash		
5	3/16	03	42002803	28.13
6	1/4	04	42002804	24.71
8	5/16	05	42002805	29.51
10	3/8	06	42002806	35.14
12	1/2	08	42002808	45.41
16	5/8	10	42002810	85.50
19	3/4	12	42002812	90.41
25	1	16	42002816	159.39

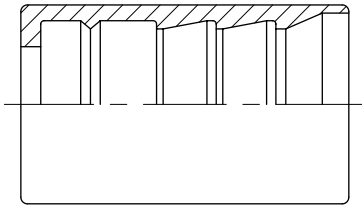
SWAGED FERRULE



THERMOPLASTIC COLLAR 2 WIRE

NOMINAL HOSE BORE			PART NUMBER	Sugg
mm	in	dash		
6	1/4	04	42002904	21.03
10	3/8	06	42002906	35.25
12	1/2	08	42002908	53.41
16	5/8	10	42002910	82.79
19	3/4	12	42002912	106.81

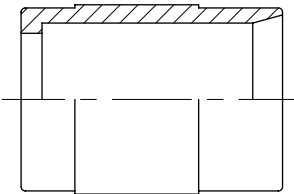
SWAGED FERRULE



4SH / R13 / R15 COLLARS

NOMINAL HOSE BORE			PART NUMBER	Sugg RETAIL
mm	in	dash		
19	3/4	12	44000912	98.62
25	1	16	44000916	154.80
31	1 1/4	20	44000920	278.45
31	1 1/4	20	44001320	898.04
38	1 1/2	24	44001420	533.09
51	2	32	44000924	151.23
38	1 1/2	24	44001324	966.35
51	2	32	44001424	404.00
38	1 1/2	24	44000932	439.82
51	2	32	44001332	637.51
51	2	32	44001432	1870.18

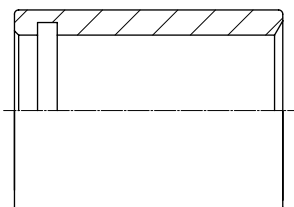
SWAGED FERRULE



CONVOLUTED TEFLON COLLARS

NOMINAL HOSE BORE			PART NUMBER	Sugg RETAIL
mm	in	dash		
10	3/8	6	PTC-06	61.97
12	1/2	8	PTC-08	69.25
16	5/8	10	PTC-10	95.74
19	3/4	12	PTC-12	145.73
25	1	16	PTC-16	151.41

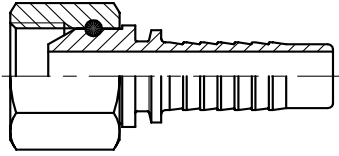
SWAGED FERRULE



SMOOTH BORE TEFLON COLLARS

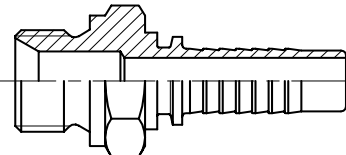
NOMINAL HOSE BORE			PART NUMBER	Sugg RETAIL
mm	in	dash		
6	1/4	04	42002604	23.33
10	3/8	06	42002606	56.67
12	1/2	08	42002608	58.88
16	5/8	10	42002610	85.94
19	3/4	12	42002612	98.84
25	1	16	42002616	161.51

BSP FEMALE



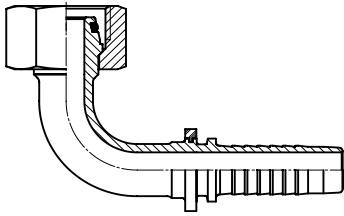
B.S.P. Thread	DASH No.	NOMINAL HOSE BORE			PART NUMBER	Sugg RETAIL
		mm	in	dash		
1/8"	02	6	1/4	04	42010204	32.56
1/4"	04	6	1/4	04	42010404	18.81
1/4"	04	10	3/8	06	42010406	40.54
3/8"	06	6	1/4	04	42010604	31.71
3/8"	06	10	3/8	06	42010606	27.54
3/8"	06	12	1/2	08	42010608	49.74
1/2"	08	10	3/8	06	42010806	45.80
1/2"	08	12	1/2	08	42010808	35.50
5/8"	10	12	1/2	08	42011008	59.37
5/8"	10	16	5/8	10	42011010	92.98
3/4"	12	12	1/2	08	42011208	87.27
3/4"	12	16	5/8	10	42011210	84.87
3/4"	12	19	3/4	12	42011212	111.23
1"	16	19	3/4	12	42011612	142.44
1"	16	25	1	16	42011616	145.25
1-1/4"	20	31	1-1/4	20	42012020	200.61
1-1/2"	24	38	1-1/2	24	42012424	316.72
2"	32	51	2	32	42013232	606.87

BSP MALE



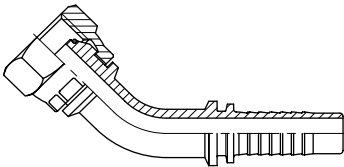
B.S.P. Thread	DASH No.	NOMINAL HOSE BORE			PART NUMBER	Sugg RETAIL
		mm	in	dash		
1/8"	02	6	1/4	04	42020204	34.06
1/4"	04	6	1/4	04	42020404	28.45
1/4"	04	10	3/8	06	42020406	49.73
3/8"	06	6	1/4	04	42010604	39.81
3/8"	06	10	3/8	06	42020606	41.27
3/8"	06	12	1/2	08	42020608	42.50
1/2"	08	10	3/8	06	42020806	48.47
1/2"	08	12	1/2	08	42020808	48.52
5/8"	10	16	5/8	10	42021010	97.23
3/4"	12	19	3/4	12	42021212	103.89
1"	16	25	1	16	42021616	142.23
1-1/4"	20	31	1-1/4	20	42022020	269.22
1-1/2"	24	38	1-1/2	24	42022424	382.66
2"	32	51	2	32	42023232	702.45

BSP FEMALE 90° SWEPT ELBOW



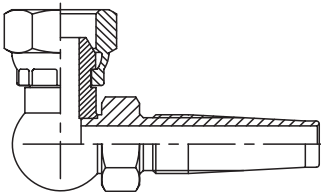
B.S.P. Thread	DASH No.	NOMINAL HOSE BORE			PART NUMBER	Sugg RETAIL
		mm	in	dash		
1/8"	02	6	1/4	04	42030204	75.43
1/4"	04	6	1/4	04	42030404	56.28
3/8"	06	6	1/4	04	42030604	57.43
3/8"	06	10	3/8	06	42030606	47.55
1/2"	08	10	3/8	06	42030806	73.69
1/2"	08	12	1/2	08	42030808	88.57
5/8"	10	16	5/8	10	42031010	110.88
3/4"	12	16	5/8	10	42031210	154.00
3/4"	12	19	3/4	12	42031212	128.43
1"	16	19	3/4	12	42031612	371.50
1"	16	25	1	16	42031616	216.89
1-1/4"	20	31	1-1/4	20	42032020	448.41
1-1/2"	24	38	1-1/2	24	42032424	742.83
2"	32	51	2	32	42033232	1543.38

BSP FEMALE 45° SWEPT ELBOW



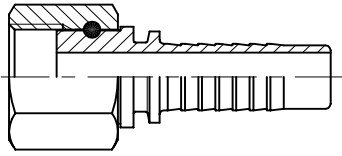
B.S.P. Thread	DASH No.	NOMINAL HOSE BORE			PART NUMBER	Sugg RETAIL
		mm	in	dash		
1/4"	04	6	1/4	04	42040404	48.82
3/8"	06	10	3/8	06	42040606	64.23
1/2"	08	12	1/2	08	42040808	87.80
5/8"	10	16	5/8	10	42041010	122.23
3/4"	12	19	3/4	12	42041212	125.75
1"	16	25	1	16	42041616	208.66
1-1/4"	20	31	1-1/4	20	42042020	389.80
1-1/2"	24	38	1-1/2	24	42042424	771.47
2"	32	51	2	32	42043232	1435.18

BSP 90° COMPACT FEMALE



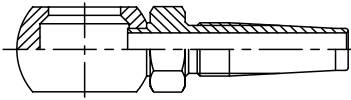
B.S.P. Thread	DASH No.	NOMINAL HOSE BORE			PART NUMBER	Sugg RETAIL
		mm	in	dash		
1/4"	04	6	1/4	04	42050404	62.31
3/8"	06	10	3/8	06	42050606	115.00
1/2"	08	12	1/2	08	42050808	150.81

BSP FLAT FACE FEMALE



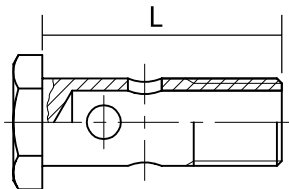
B.S.P. Thread	DASH No.	NOMINAL HOSE BORE			PART NUMBER	Sugg RETAIL
		mm	in	dash		
1/4"	04	6	1/4	04	42090404	40.28
3/8"	06	10	3/8	06	42090606	39.74
1/2"	08	10	3/8	06	42090806	60.09
1/2"	08	12	1/2	08	42090808	58.82
3/4"	12	19	3/4	12	42091212	231.84

BSP BANJO



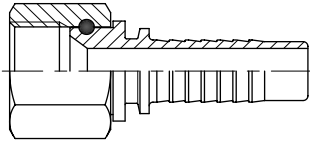
B.S.P. Thread	DASH No.	NOMINAL HOSE BORE			PART NUMBER	Sugg RETAIL
		mm	in	dash		
1/4"	04	6	1/4	04	42800404	53.59
3/8"	06	10	3/8	06	42800606	56.48
1/2"	08	12	1/2	08	42800808	122.22
3/4"	12	19	3/4	12	42801212	433.19

BSP BANJO BOLT



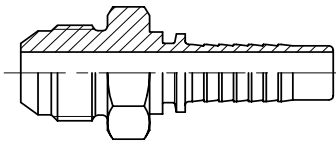
B.S.P. Thread	DASH No.	PART NUMBER	Sugg RETAIL
1/4"	04	42800104	30.67
3/8"	06	42800106	109.07
1/2"	08	42800108	40.39
3/4"	12	42800112	183.54

JIC FEMALE



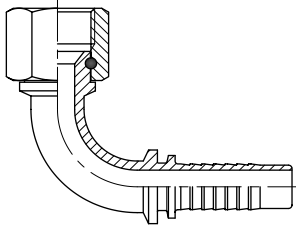
JIC Thread	DASH No.	NOMINAL HOSE BORE			PART NUMBER	Sugg RETAIL
		mm	in	dash		
7/16" X 20	07	6	1/4	04	42130704	23.36
1/2" X 20	08	6	1/4	04	42130804	26.38
9/16" X 18	09	6	1/4	04	42130904	25.14
9/16" X 18	09	10	3/8	06	42130906	34.11
3/4" X 16	12	10	3/8	06	42131206	36.66
3/4" X 16	12	12	1/2	08	42131208	43.36
7/8" X 14	14	10	3/8	06	42131406	91.24
7/8" X 14	14	12	1/2	08	42131408	44.07
7/8" X 14	14	16	5/8	10	42131410	63.32
1-1/16" X 12	17	12	1/2	08	42131708	90.83
1-1/16" X 12	17	16	5/8	10	42131710	76.00
1-1/16" X 12	17	19	3/4	12	42131712	69.63
1-3/16" X 12	19	19	3/4	12	42131912	154.17
1-3/16" X 12	19	19	3/4	12	42131912	125.09
1-5/16" X 12	21	19	3/4	12	42132112	143.36
1-5/16" X 12	21	25	1	16	42132116	244.82
1-5/8" X 12	26	31	1	16	42132616	217.05
1-5/8" X 12	26	31	1-1/4	20	42132620	396.65
1-7/8" X 12	30	38	1-1/2	24	42133024	892.26
2-1/2" X 12	40	51	2	32	42134032	

JIC MALE



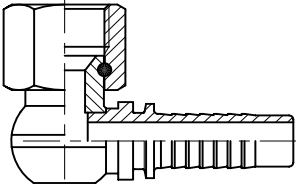
JIC Thread	DASH No.	NOMINAL HOSE BORE			PART NUMBER	Sugg RETAIL
		mm	in	dash		
7/16" X 20	07	6	1/4	04	42140704	24.98
1/2" X 20	08	6	1/4	04	42140804	30.56
9/16" X 18	09	6	1/4	04	42140904	29.69
9/16" X 18	09	10	3/8	06	42140906	25.32
3/4" X 16	12	10	3/8	06	42141206	44.63
3/4" X 16	12	12	1/2	08	42141208	34.12
7/8" X 14	14	12	1/2	08	42141408	51.41
7/8" X 14	14	16	5/8	10	42141410	56.93
1-1/16" X 12	17	16	5/8	10	42141710	60.51
1-1/16" X 12	17	19	3/4	12	42141712	59.74
1-5/16" X 12	21	19	3/4	12	42142112	149.04
1-5/16" X 12	21	25	1	16	42142116	228.56
1-5/8" X 12	26	31	1-1/4	20	42142620	374.28
1-7/8" X 12	30	38	1-1/2	24	42143024	432.98
2-1/2" X 12	40	51	2	32	42144032	838.35

JIC FEMALE 90° SWEEP ELBOW



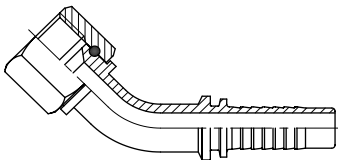
JIC Thread	DASH No.	NOMINAL HOSE BORE			PART NUMBER	Sugg RETAIL
		mm	in	dash		
7/16" X 20	07	6	1/4	04	42160704	33.18
1/2" X 20	08	6	1/4	04	42160804	52.05
9/16" X 18	09	6	1/4	04	42160904	77.63
9/16" X 18	09	10	3/8	06	42160906	53.98
3/4" X 16	12	10	3/8	06	42161206	72.65
3/4" X 16	12	12	1/2	08	42161208	73.08
7/8" X 14	14	12	1/2	08	42161408	73.61
7/8" X 14	14	16	5/8	10	42161410	111.16
1-1/16" X 12	17	12	1/2	08	42161708	192.81
1-1/16" X 12	17	16	5/8	10	42161710	140.56
1-1/16" X 12	17	19	3/4	12	42161712	143.07
1-5/16" X 12	21	19	3/4	12	42162112	281.51
1-5/16" X 12	21	25	1	16	42162116	288.06
1-5/8" X 12	26	31	1-1/4	20	42142620	545.03
1-7/8" X 12	30	38	1-1/2	24	42163024	821.11
2-1/2" X 12	40	51	2	32	42164032	1872.82

JIC 90° COMPACT FEMALE



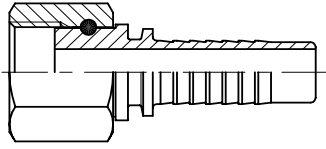
JIC Thread	DASH No.	NOMINAL HOSE BORE			PART NUMBER	Sugg RETAIL
		mm	in	dash		
7/16" X 20	07	6	1/4	04	42180704	184.36
9/16" X 18	09	10	3/8	06	42180906	106.00
3/4" X 16	12	12	1/2	08	42181208	171.98
1-1/16" X 12	17	16	5/8	10	42181712	167.72

JIC FEMALE 45° SWEEP ELBOW



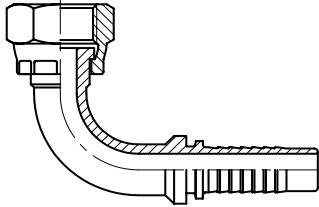
JIC Thread	DASH No.	NOMINAL HOSE BORE			PART NUMBER	Sugg RETAIL
		mm	in	dash		
7/16" X 20	07	6	1/4	04	42170704	60.55
1/2" X 20	08	6	1/4	04	42170804	47.77
9/16" X 18	09	6	1/4	04	42170904	90.72
9/16" X 18	09	10	3/8	06	42170906	49.71
3/4" X 16	12	10	3/8	06	42171206	73.08
3/4" X 16	12	12	1/2	08	42171208	88.96
7/8" X 14	14	12	1/2	08	42171408	78.23
7/8" X 14	14	16	5/8	10	42171410	148.79
1-1/16" X 12	17	16	5/8	10	42171710	141.17
1-1/16" X 12	17	19	3/4	12	42171712	162.24
1-5/16" X 12	21	25	1	16	42172116	304.37
1-5/8" X 12	26	31	1-1/4	20	42172620	558.26
1-7/8" X 12	30	38	1-1/2	24	42173024	814.89
2-1/2" X 12	40	51	2	32	42174032	1554.23

ORFS FEMALE



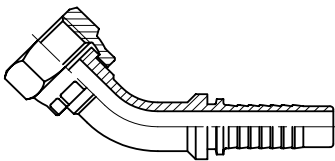
Thread Size	DASH No.	NOMINAL HOSE BORE			PART NUMBER	Sugg RETAIL
		mm	in	dash		
9/16" X 18	04	6	1/4	04	42900404	28.38
11/16" X 16	06	10	3/8	06	42900606	59.90
13/16" X 16	08	12	1/2	08	42900808	69.02
1" X 14	10	16	5/8	10	42901010	89.95
1-3/16" X 12	12	19	3/4	12	42901212	147.15
1-7/16" X 12	16	25	1	16	42901616	237.69
1-11/16" X 12	20	31	1-1/4	20	42902020	367.77
2" X 12	24	38	1-1/2	24	42902424	596.92

ORFS FEMALE 90° SWEEP ELBOW



Thread Size	DASH No.	NOMINAL HOSE BORE			PART NUMBER	Sugg RETAIL
		mm	in	dash		
9/16" X 18	04	6	1/4	04	42910404	64.72
11/16" X 16	06	10	3/8	06	42910606	78.73
13/16" X 16	08	12	1/2	08	42910808	92.28
1" X 14	10	16	5/8	10	42911010	176.57
1-3/16" X 12	12	19	3/4	12	42911212	216.74
1-7/16" X 12	16	25	1	16	42911616	348.17
1-11/16" X 12	20	31	1-1/4	20	42912020	638.11
2" X 12	24	38	1-1/2	24	42912424	837.91

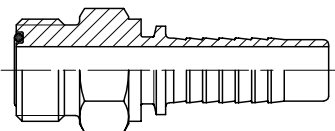
ORFS FEMALE 45° SWEEP ELBOW



Thread Size	DASH No.	NOMINAL HOSE BORE			PART NUMBER	Sugg RETAIL
		mm	in	dash		
9/16" X 18	04	6	1/4	04	42920404	56.84
11/16" X 16	06	10	3/8	06	42920606	81.96
13/16" X 16	08	12	1/2	08	42920808	102.42
1" X 14	10	16	5/8	10	42921010	162.71
1-3/16" X 12	12	19	3/4	12	42921212	252.85
1-7/16" X 12	16	25	1	16	42921616	329.13
1-11/16" X 12	20	31	1-1/4	20	42922020	709.54
2" X 12	24	38	1-1/2	24	42922424	1046.13

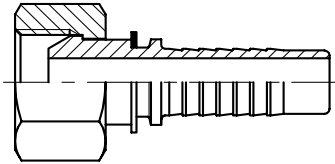
5/8

ORFS MALE



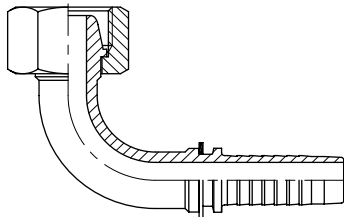
Thread Size	DASH No.	NOMINAL HOSE BORE			PART NUMBER	Sugg RETAIL
		mm	in	dash		
9/16" X 18	04	6	1/4	04	42950404	78.53
11/16" X 16	06	10	3/8	06	42950606	85.22
13/16" X 16	08	12	1/2	08	42950808	115.39
1" X 14	10	16	5/8	10	42951010	187.93
1-3/16" X 12	12	19	3/4	12	42951212	188.80
1-7/16" X 12	16	25	1	16	42951616	339.40

METRIC LOOSE NUT FEMALE



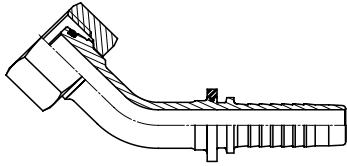
Metric Thread	NOMINAL HOSE BORE			PART NUMBER	Sugg RETAIL
	mm	in	dash		
M12 X 1.5	6	1/4	04	42700604	50.67
M14 X 1.5	6	1/4	04	42730604	62.71
M14 X 1.5	6	1/4	04	42700804	25.10
M16 X 1.5	6	1/4	04	42730804	56.43
M16 X 1.5	6	1/4	04	42701004	31.31
M16 X 1.5	10	3/8	06	42701006	56.21
M18 X 1.5	6	1/4	04	42731004	42.48
M18 X 1.5	10	3/8	06	42731006	80.74
M18 X 1.5	10	3/8	06	42701206	50.93
M20 X 1.5	10	3/8	06	42731206	41.39
M22 X 1.5	10	3/8	06	42731406	61.33
M22 X 1.5	12	1/2	08	42701508	40.47
M24 X 1.5	12	1/2	08	42731608	52.64
M26 X 1.5	12	1/2	08	42701808	96.07
M26 X 1.5	16	5/8	10	42701810	59.66
M30 X 2.0	16	5/8	10	42732010	109.20
M30 X 2.0	19	3/4	12	42702210	119.16
M36 X 2.0	19	3/4	12	42732512	166.75
M36 X 2.0	25	1	16	42702816	131.23
M42 X 2.0	25	1	16	42733016	222.58
M45 X 2.0	31	1-1/4	20	42703520	219.67
M52 X 2.0	31	1-1/4	20	42733820	358.26
M52 X 2.0	38	1-1/2	24	42704224	411.00

METRIC LOOSE NUT FEMALE 90° ELBOW



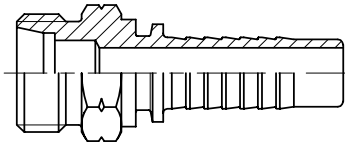
Metric Thread	NOMINAL HOSE BORE			PART NUMBER	Sugg RETAIL
	mm	in	dash		
M12 X 1.5	6	1/4	04	42710604	95.52
M14 X 1.5	6	1/4	04	42710804	64.72
M16 X 1.5	6	1/4	04	42740804	50.53
M16 X 1.5	6	1/4	04	42711004	38.63
M16 X 1.5	10	3/8	06	42711006	94.55
M18 X 1.5	10	3/8	06	42711206	78.83
M20 X 1.5	10	3/8	06	42741206	52.89
M22 X 1.5	12	1/2	08	42711508	73.69
M24 X 1.5	12	1/2	08	42741608	88.98
M26 X 1.5	12	1/2	08	42711808	146.17
M26 X 1.5	16	5/8	10	42711810	120.03
M30 X 2.0	19	3/4	12	42712212	191.35
M36 X 2.0	19	3/4	12	42742512	249.77
M36 X 2.0	25	1	16	42712816	383.87
M42 X 2.0	25	1	16	42743016	420.96
M52 X 2.0	38	1-1/4	20	42743820	743.27

METRIC LOOSE NUT FEMALE 45° ELBOW



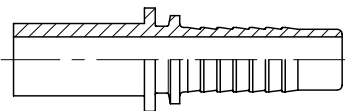
Metric Thread	NOMINAL HOSE BORE			PART NUMBER	Sugg RETAIL
	mm	in	dash		
M14 X 1.5	6	1/4	04	42720804	54.20
M18 X 1.5	10	3/8	06	42721206	47.58
M22 X 1.5	12	1/2	08	42721508	79.11
M30 X 2.0	19	3/4	12	42722212	167.96
M36 X 2.0	19	3/4	12	42752512	249.83
M42 X 2.0	25	1	16	42753016	459.76
M5 X 2.02	31	1-1/4	20	42753820	730.19

METRIC MALE - DKO



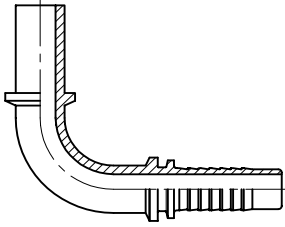
Metric Thread	NOMINAL HOSE BORE			PART NUMBER	Sugg RETAIL
	mm	in	dash		
M12 X 1.5	6	1/4	04	42201204	29.60
M14 X 1.5	8	1/4	04	42201404	25.84
M16 X 1.5	8	1/4	04	42231604	41.93
M16 X 1.5	10	1/4	04	42201604	34.91
M16 X 1.5	10	3/8	06	42201606	33.04
M18 X 1.5	10	3/8	06	42201806	28.29
M20 X 1.5	12	3/8	06	42232006	40.77
M22 X 1.5	14	3/8	06	42232206	54.64
M22 X 1.5	15	3/8	06	42202206	49.99
M22 X 1.5	15	1/2	08	42202208	37.27
M24 X 1.5	16	1/2	08	42232408	52.68
M26 X 1.5	18	1/2	08	42202608	100.99
M26 X 1.5	18	5/8	10	42202610	59.25
M30 X 2.0	20	5/8	10	42233010	88.32
M30 X 2.0	20	3/4	12	42233012	198.47
M30 X 2.0	22	3/4	12	42203012	88.67
M36 X 2.0	25	3/4	12	42233612	173.55
M36 X 2.0	28	1	16	42203616	145.46
M52 X 2.0	38	1-1/4	20	42235220	498.57

METRIC STANDPIPE



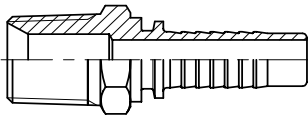
OD mm	NOMINAL HOSE BORE			PART NUMBER	Sugg RETAIL
	mm	in	dash		
M6	6	1/4	04	42260604	19.85
M8	6	1/4	04	42260804	16.71
M10	6	1/4	04	42261004	17.90
M10	10	3/8	06	42261006	23.59
M12	6	1/4	04	42261204	32.02
M12	10	3/8	06	42261206	21.03
M12	12	1/2	08	42261208	61.46
M14	12	1/2	08	42261408	52.21
M15	12	1/2	08	42261508	33.09
M16	12	1/2	08	42261608	35.70
M18	12	1/2	08	42261808	44.37
M18	16	5/8	10	42261810	47.38
M20	16	5/8	10	42262010	52.24
M20	19	3/4	12	42262012	80.28
M22	19	3/4	12	42262212	59.44
M25	19	3/4	12	42262512	72.36
M25	25	1	16	42262516	104.72
M28	25	1	16	42262816	98.31
M30	25	1	16	42263016	115.97

METRIC STANDPIPE 90° SWEEP ELBOW



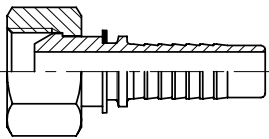
OD mm	NOMINAL HOSE BORE			PART NUMBER	Sugg RETAIL
	mm	in	dash		
M6	6	1/4	04	42270604	51.98
M8	6	1/4	04	42270804	33.73
M10	6	1/4	04	42771004	48.47
M10	10	3/8	06	42271006	59.42
M12	10	3/8	06	42271206	69.09
M15	12	1/2	08	42271508	85.13
M16	12	1/2	08	42271608	89.86
M22	19	3/4	12	42272212	174.75

NPTF MALE



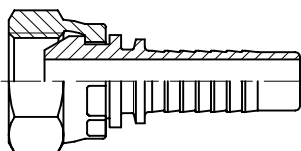
NPTF Thread	DASH No.	NOMINAL HOSE BORE			PART NUMBER	Sugg RETAIL
		mm	in	dash		
1/8" X 27	02	6	1/4	04	42400204	25.05
1/4" X 18	04	6	1/4	04	42400404	23.79
1/4" X 18	04	10	3/8	06	42400406	31.31
3/8" X 18	06	6	1/4	04	42400604	37.58
3/8" X 18	06	10	3/8	06	42400606	32.17
1/2" X 14	08	10	3/8	06	42400806	45.59
1/2" X 14	08	12	1/2	08	42400808	44.11
1/2" X 14	08	19	3/4	12	42400812	294.27
3/4" X 14	12	12	1/2	08	42401208	242.32
3/4" X 14	12	19	3/4	12	42401212	92.25
1" X 11.5	16	25	1	16	42401616	149.68
1-1/4" X 11.5	20	31	1-1/4	20	42402020	273.92
1-1/2" X 11.5	24	38	1-1/2	24	42402424	332.83
2" X 11.5	32	51	2	32	42403232	587.93

NPSM FEMALE



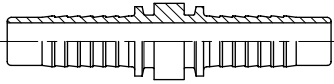
NPSM Thread	DASH No.	NOMINAL HOSE BORE			PART NUMBER	Sugg RETAIL
		mm	in	dash		
1/4"	04	8	1/4	04	42410404	59.10
3/8"	06	10	3/8	06	42410606	63.97

METRIC 60° CONE FEMALE



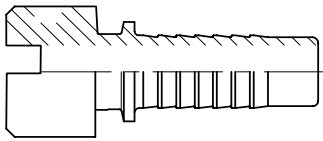
Metric Thread	NOMINAL HOSE BORE			PART NUMBER	Sugg RETAIL
	mm	in	dash		
M14 X 1.5	6	1/4	04	42841404	60.55
M18 X 1.5	10	3/8	06	42841806	73.44
M22 X 1.5	12	1/2	08	42842208	98.07
M24 X 1.5	16	5/8	10	42842410	130.63
M30 X 1.5	19	3/4	12	42843012	332.02

HOSE JOINERS



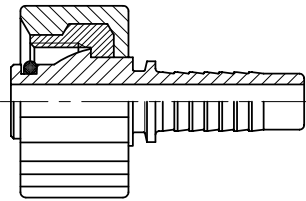
NOMINAL HOSE BORE			PART NUMBER	Sugg RETAIL
mm	in	dash		
6	1/4	04	42770404	152.41
10	3/8	06	42770606	168.56
12	1/2	08	42770808	171.13
19	3/4	12	42771212	187.55
25	1	16	42771616	232.08

BLANKTAILS



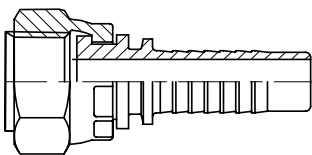
PART NUMBER	Sugg RETAIL
U08MOD04	22.33
U10MOD06	26.80
U12MOD08	38.34
U16MOD10	44.01
U19MOD12	50.84
U25MOD16	172.20

WATERWASH INSERTS



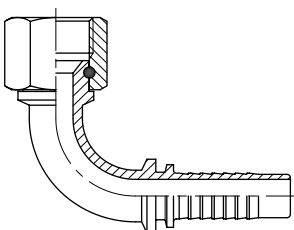
Metric Thread	NOMINAL HOSE BORE			PART NUMBER	Sugg RETAIL
	mm	in	dash		
M22 X 1.5	6	1/4	04	43731404	86.65
M22 X 1.5	10	3/8	06	43731406	82.44

S.A.E. FEMALE



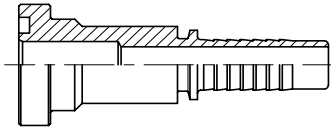
NPSM Thread	DASH No.	NOMINAL HOSE BORE			PART NUMBER	Sugg RETAIL
		mm	in	dash		
5/8" X 18	10	10	3/8	06	U10SF06	46.56

S.A.E. 90° SWEEP FEMALE



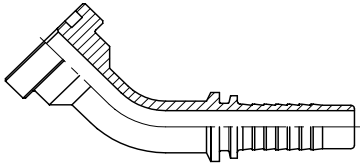
NPSM Thread	DASH No.	NOMINAL HOSE BORE			PART NUMBER	Sugg RETAIL
		mm	in	dash		
5/8" X 18	10	10	3/8	06	U10SF90S06	79.22

S.A.E. / ISO FLANGE CODE 61



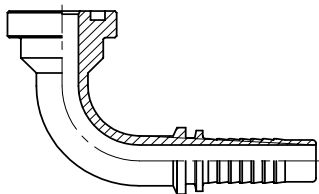
NOMINAL FLANGE SIZE			NOMINAL HOSE BORE			PART NUMBER	Sugg RETAIL
mm	in	dash	mm	in	dash		
13	1/2	8	12	1/2	08	42430808	133.12
19	3/4	12	12	1/2	08	42431208	309.98
19	3/4	12	19	3/4	12	42431212	169.33
25	1	16	25	1	16	42431616	285.14
32	1-1/4	20	25	1	16	42432016	392.12
32	1-1/4	20	32	1-1/4	20	42432020	428.35
38	1-1/2	24	38	1-1/4	20	42432420	521.93
38	1-1/2	24	38	1-1/2	24	42432424	619.19
51	2	32	51	2	32	42433232	863.06

S.A.E. / ISO FLANGE 45° ELBOW CODE 61



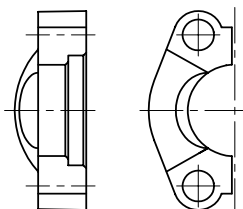
NOMINAL FLANGE SIZE			NOMINAL HOSE BORE			PART NUMBER	Sugg RETAIL
mm	in	dash	mm	in	dash		
13	1/2	8	12	1/2	08	42480808	212.54
19	3/4	12	12	1/2	08	42481208	308.88
19	3/4	12	19	3/4	12	42481212	226.88
25	1	16	25	1	16	42481616	379.98
32	1-1/4	20	25	1	16	42482016	540.93
32	1-1/4	20	32	1-1/4	20	42482020	525.95
38	1-1/2	24	38	1-1/2	24	42482424	820.28
51	2	32	51	2	32	42483232	1680.66

S.A.E. / ISO FLANGE 90° ELBOW CODE 61



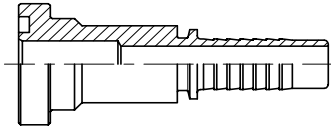
NOMINAL FLANGE SIZE			NOMINAL HOSE BORE			PART NUMBER	Sugg RETAIL
mm	in	dash	mm	in	dash		
13	1/2	8	12	1/2	08	42440808	227.06
19	3/4	12	19	3/4	12	42441212	233.82
25	1	16	19	3/4	12	42441612	457.86
25	1	16	25	1	16	42441616	400.37
32	1-1/4	20	25	1	16	42442016	535.74
32	1-1/4	20	31	1-1/4	20	42442020	571.67
38	1-1/2	24	31	1-1/4	20	42442420	771.22
38	1-1/2	24	38	1-1/2	24	42442424	812.36
51	2	32	38	1-1/2	24	42443224	1644.65
51	2	32	51	2	32	42443232	1683.84

S.A.E. / ISO SPLIT FLANGE CLAMPS CODE 61



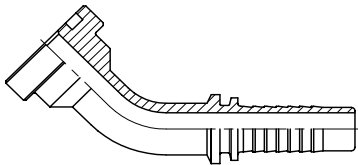
NOMINAL HOSE BORE			PART NUMBER	Sugg RETAIL
mm	in	dash		
13	1/2	08	RU08SFC-3	78.68
19	3/4	12	RU12SFC-3	106.35
25	1	16	RU16SFC-3	150.51
32	1-1/4	20	RU20SFC-3	197.77
38	1-1/2	24	RU24SFC-3	268.24
51	2	32	RU32SFC-3	381.44

S.A.E. / ISO FLANGE CODE 62



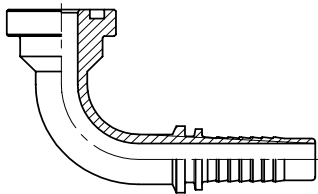
NOMINAL FLANGE SIZE			NOMINAL HOSE BORE			PART NUMBER	Sugg RETAIL
mm	in	dash	mm	in	dash		
13	1/2	08	12	1/2	08	42530808	210.28
19	3/4	12	19	3/4	12	42531212	223.33
25	1	16	19	3/4	12	42531612	260.57
25	1	16	25	1	16	42531616	355.03
32	1-1/4	20	25	1	16	42532016	357.47
32	1-1/4	20	32	1-1/4	20	42532020	474.09
38	1-1/2	24	32	1-1/4	20	42532420	639.54
38	1-1/2	24	38	1-1/2	24	42532424	754.08
51	2	32	51	2	32	42533232	1083.25

S.A.E. / ISO FLANGE 45° ELBOW CODE 62



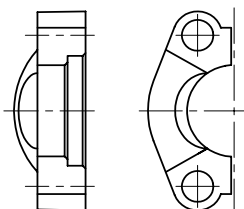
NOMINAL FLANGE SIZE			NOMINAL HOSE BORE			PART NUMBER	Sugg RETAIL
mm	in	dash	mm	in	dash		
19	3/4	12	19	3/4	12	42581212	246.24
25	1	16	19	3/4	12	42581612	394.75
25	1	16	25	1	16	42581616	408.83
32	1-1/4	20	25	1	16	42582016	609.72
32	1-1/4	20	32	1-1/4	20	42582020	744.81
38	1-1/2	24	38	1-1/2	24	42582424	912.24
51	2	32	51	2	32	42583232	1964.73

S.A.E. / ISO FLANGE 90° ELBOW CODE 62



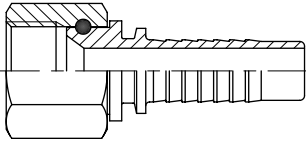
NOMINAL FLANGE SIZE			NOMINAL HOSE BORE			PART NUMBER	Sugg RETAIL
mm	in	dash	mm	in	dash		
13	1/2	8	12	1/2	08	42540808	265.93
19	3/4	12	19	3/4	12	42541212	275.98
25	1	16	19	3/4	12	42541612	404.11
25	1	16	25	1	16	42541616	464.16
32	1-1/4	20	25	1	16	42542016	712.71
32	1-1/4	20	31	1-1/4	20	42542020	737.22
38	1-1/2	24	31	1-1/4	20	42542420	785.55
38	1-1/2	24	38	1-1/2	24	42542424	1156.06
51	2	32	51	2	32	42543232	2009.27

S.A.E. / ISO SPLIT FLANGE CLAMPS CODE 62



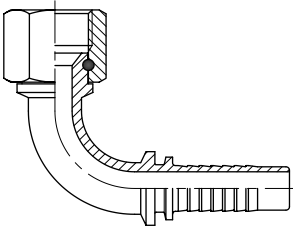
NOMINAL HOSE BORE			PART NUMBER	Sugg RETAIL
mm	in	dash		
13	1/2	08	RU08SFC-6	395.12
19	3/4	12	RU12SFC-6	187.90
25	1	16	RU16SFC-6	289.11
32	1-1/4	20	RU20SFC-6	426.25
38	1-1/2	24	RU24SFC-6	868.79
51	2	32	RU32SFC-6	1308.80

JIC FEMALE INTERLOCK



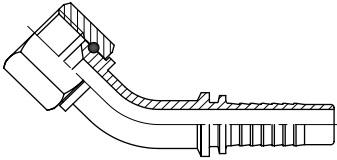
JIC Thread	DASH No.	NOMINAL HOSE BORE			PART NUMBER	Sugg RETAIL
		mm	in	dash		
1-1/16" 12	17	19	3/4	12	44131712	333.66
1-5/16" 12	21	25	1	16	44132116	420.21
1-5/8" 12	26	31	1-1/4	20	44132620	984.03
1-7/8" 12	30	38	1-1/2	24	44133024	476.58

JIC FEMALE 90° SWEEP ELBOW INTERLOCK



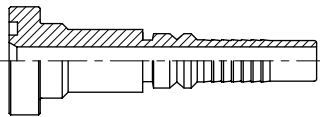
JIC Thread	DASH No.	NOMINAL HOSE BORE			PART NUMBER	Sugg RETAIL
		mm	in	dash		
1-1/16" 12	17	19	3/4	12	44161712	324.61
1-5/16" 12	21	25	1	16	44162116	515.80
1-5/8" 12	26	31	1-1/4	20	44162620	689.18
1-7/8" 12	30	38	1-1/2	24	44163024	613.94

JIC FEMALE 45° SWEEP ELBOW INTERLOCK



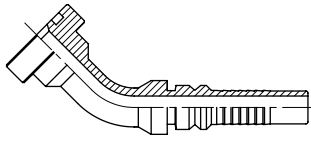
JIC Thread	DASH No.	NOMINAL HOSE BORE			PART NUMBER	Sugg RETAIL
		mm	in	dash		
1-1/16" 12	17	19	3/4	12	44171712	131.09
1-5/16" 12	21	25	1	16	44172116	212.19
1-5/8" 12	26	31	1-1/4	20	44172620	346.02

S.A.E. 6000 STRAIGHT FLANGE INTERLOCK CODE 62



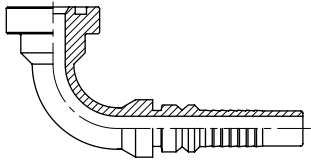
NOMINAL FLANGE SIZE			NOMINAL HOSE BORE			PART NUMBER	Sugg RETAIL
mm	in	dash	mm	in	dash		
19	3/4	12	19	3/4	12	44531212	265.70
25	1	16	19	3/4	12	44531612	541.73
25	1	16	25	1	16	44531616	540.06
32	1-1/4	20	25	1	16	44532016	787.87
32	1-1/4	20	32	1-1/4	20	44532020	574.48
38	1-1/2	24	32	1-1/4	20	44532420	1139.10
38	1-1/2	24	38	1-1/2	24	44532424	776.05
51	2	32	51	2	32	44533232	776.33

S.A.E. 6000 45° FLANGE INTERLOCK CODE 62



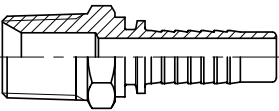
NOMINAL FLANGE SIZE			NOMINAL HOSE BORE			PART NUMBER	Sugg RETAIL
mm	in	dash	mm	in	dash		
19	3/4	12	19	3/4	12	44581212	187.50
25	1	16	25	1	16	44581616	217.59
32	1-1/4	20	25	1	16	44582016	446.92
32	1-1/4	20	32	1-1/4	20	44582020	1330.69
38	1-1/2	24	32	1-1/4	20	44582420	826.75
38	1-1/2	24	38	1-1/2	24	44582424	852.96
51	2	32	51	2	32	44583232	1367.81

S.A.E. 6000 90° FLANGE INTERLOCK CODE 62



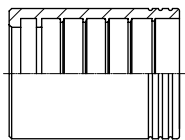
NOMINAL FLANGE SIZE			NOMINAL HOSE BORE			PART NUMBER	Sugg RETAIL
mm	in	dash	mm	in	dash		
19	3/4	12	19	3/4	12	44541212	441.82
25	1	16	19	3/4	12	44541612	207.22
25	1	16	25	1	16	44541616	549.26
32	1-1/4	20	32	1-1/4	20	44542020	1250.64
38	1-1/2	24	32	1-1/4	20	44542420	693.68
38	1-1/2	24	38	1-1/2	24	44542424	959.09
51	2	32	51	2	32	44543232	1679.97

NPTF MALE (700 BAR HOSE)



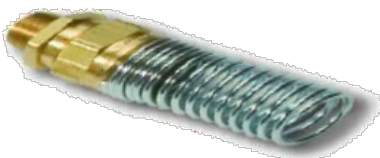
Metric Thread	DASH No.	NOMINAL HOSE BORE		PART NUMBER	BOX	CAT	Sugg RETAIL
		mm	in				
1/4 x 18	04	6	1/4	35400404			69.43
3/8 x 18	04	6	1/4	35400604			79.01
3/8 x 18	06	10	3/8	35400606			79.22

VERY HIGH PRESSURE FERRULE (700 BAR HOSE)



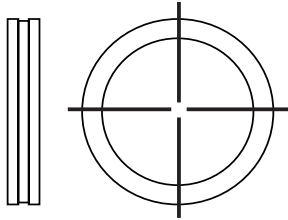
NOMINAL HOSE BORE			PART NUMBER	BOX	CAT	Sugg RETAIL
mm	in	dash				
6	1/4	04	35000104			31.23
10	3/8	06	35000106			64.04

SPRING GUARD THERMOPLASTIC HOSE



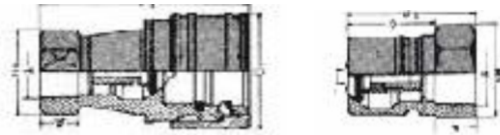
PART NUMBER	Sugg RETAIL
FG84085 (Spring Guard for 10580104 Hose)	39.19
FG84086 (Spring Guard for 10370104 Hose)	39.61
FG84087 (Spring Guard for 10370106 Hose)	38.18

DOWTY WASHERS



PART NUMBER	Sugg RETAIL
DW-02	5.06
DW-04	5.70
DW-06	6.22
DW-08	7.11
DW-10	10.87
DW-12	11.04
DW-16	7.53
DW-20	9.13
DW-24	16.57
DW-32	12.03
	25.19
	31.35
	48.55

H/P SCREW TOGETHER 3/8" NPT



DUST CAP & DUST PROBE

PART NUMBER	Sugg RETAIL
QSC06NM	253.01
QSP06FNF	156.79

DUST CAP & DUST PROBE

PART NUMBER	Sugg RETAIL
QSC06DC	224.78
QSP06DC	194.94

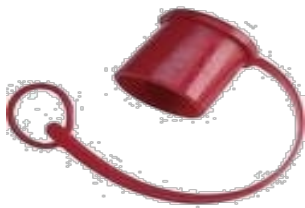
Applications

- Hydraulic cylinders / rams
- Hydraulic jacks
- Hydraulic hand pumps

Accessories

Protection covers for this style of coupling are manufactured in mild steel with retaining chain to avoid loss when coupling is in use.

DUST CAPS



PROBE DUST CAP

PART NUMBER	Sugg RETAIL
QRP04DC	25.30
QRP06DC	51.38
QRP08DC	55.86
QRP12DC	145.53
QRP16DC	104.58

CARRIER DUST CAP

PART NUMBER	Sugg RETAIL
QRC04DC	106.35
QRC06DC	60.44
QRC08DC	62.99
QRC12DC	145.31
QRC16DC	155.85

ISO 'A' Series Interface

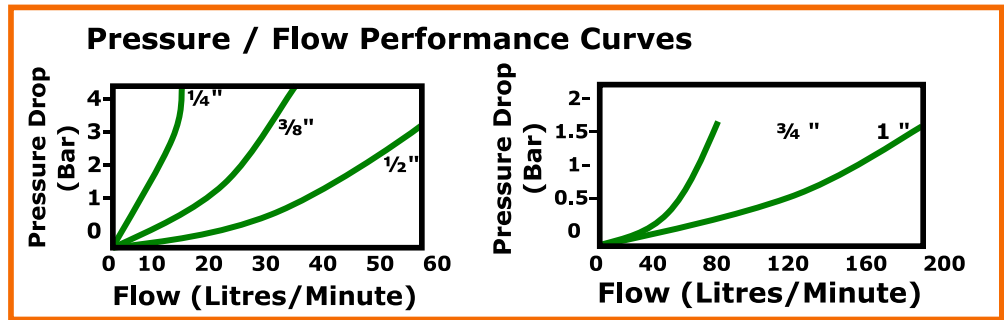
The carrier and probe sections are provided with internally spring-loaded poppet valves. An effective mechanical lock is achieved by means of located steel balls.

- O-ring seal gives positive self sealing on disconnection (carrier body has PTFE back-up washer to prevent extrusion).
- Connection and disconnection achieved using retracting sleeve.
- Working pressures meet with ISO standards.
- Interchangeable with couplings designed to ISO 'A' series interface.
- Can be supplied as full-flow non shut-off-coupling please specify at time of ordering.
- 1/4", 3/8", 1/2", 3/4" & 1" BSP and NPTF thread variations.



Applications

- Construction Industry
- Steel Industry
- Mining
- Materials Handling
- Agricultural Machinery



Accessories

Dust covers and plugs are supplied in an oil-resistant PVC elastomer with integral retaining rings to avoid loss whilst couplings are connected.

NPT FEMALE PIN TYPE

PART NO	Sugg Retail
QRC04FNF	240.97
QRC06FNF	178.74
QRC08FNF	326.83
QRC12FNF	414.97
QRC16FNF	954.76

NPT MALE PIN TYPE

PART NO	Sugg Retail
QRP04FNF	126.50
QRP06FNF	74.05
QRP08FNF	85.56
QRP12FNF	185.87
QRP16FNF	487.28

BSP FEMALE PIN TYPE

PART NO	Sugg Retail
QRC04FBF	148.95
QRC06FBF	154.15
QRC08FBF	266.35
QRC12FBF	396.36
QRC16FBF	861.53

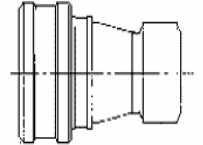
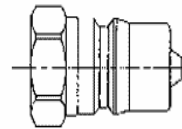
BSP MALE PIN TYPE

PART NO	Sugg Retail
QRP04FBF	88.27
QRP06FBF	140.02
QRP08FBF	90.55
QRP12FBF	180.48
QRP16FBF	464.54

ISO 'V' Series Interface

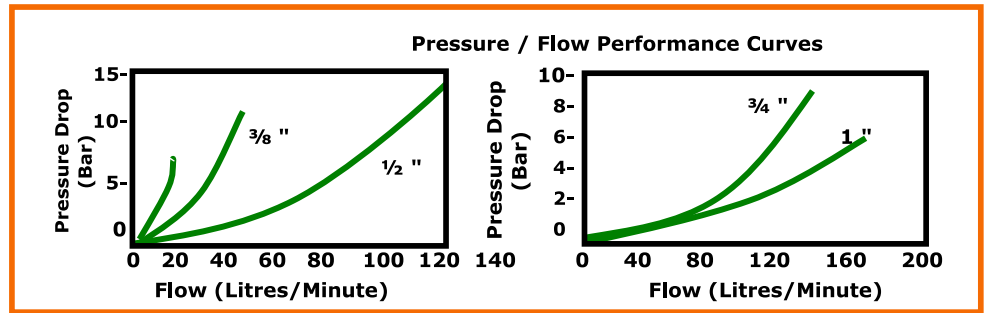
The carrier and probe sections are provided with internally spring-loaded poppet valves. An effective mechanical lock is achieved by means of located steel balls.

- O-ring seal gives positive self sealing on disconnection (carrier body has PTFE back-up washer to prevent extrusion).
- Connection and disconnection achieved using retracting sleeve.
- Working pressures meet with ISO / DIN standards.
- I08 size interchangeable with couplings designed to ISO'A' series interface
- Can be supplied with ball seal valve - please specify at time of ordering
- Can be supplied as full-flow non shut-off-coupling please specify at time of ordering.
- 1/4", 3/8", 1/2", 3/4" & 1" BSP and NPTF thread variations.



Applications

- Process Industries
- Steel Manufacturing
- Automotive Industry
- Materials Handling Plant



Accessories

Dust covers and plugs are supplied in an oil-resistant PVC elastomer with integral retaining rings to avoid loss whilst couplings are connected.

NPT FEMALE BALL TYPE

PART NO	Sugg Retail
QVCBS04FNF	174.82
QVCBS06FNF	236.77
QRCBS08FNF	274.45
QVCBS12FNF	591.92
QVCBS16FNF	1066.66

NPT MALE BALL TYPE

PART NO	Sugg Retail
QVPBS04FNF	84.80
QVPBS06FNF	107.23
QRPBS08FNF	121.38
QVPBS12FNF	303.29
QVPBS16FNF	668.07

BSP FEMALE BALL TYPE

PART NO	Sugg Retail
QVCBS04FBF	217.91
QVCBS06FBF	237.76
QRCBS08FBF	274.94
QVCBS12FBF	591.92
QVCBS16FBF	1066.66

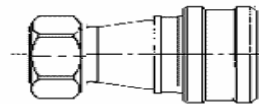
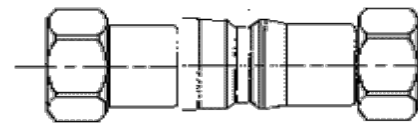
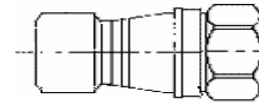
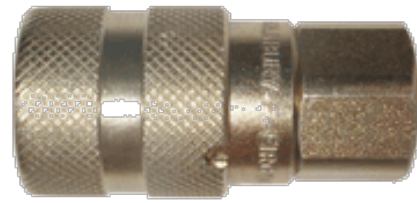
BSP MALE BALL TYPE

PART NO	Sugg Retail
QVPBS04FBF	93.87
QVPBS06FBF	107.23
QRPBS08FBF	121.38
QVPBS12FBF	303.29
QVPBS16FBF	673.44

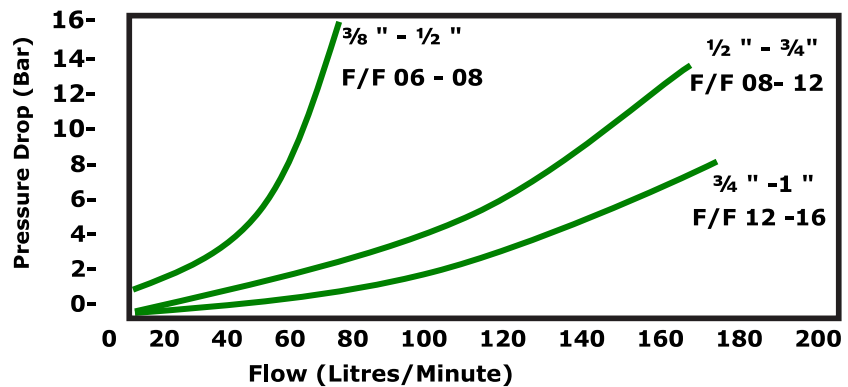
Royal Flat Face Range

Coupling and releasing couldn't be easier! To couple, simply locate the male probe into the shallow recess of the female carrier and simply push together. The sleeve automatically snaps forward. To release, simply align the safety sleeve notch with the located ball and retract the sleeve. The coupling halves instantly snap apart.

- Robust design and construction for field reliability under the harshest conditions.
- Flat mating faces with shallow location step on female carrier, easily wiped clean with positive location for male on connection.
- Minimal pressure drop performance.
- Safety-lock sleeve to guard against accidental disconnection.
- Positive valve action giving non-spill design preventing fluid loss on connection and disconnection with no air inclusion on connection
- Assured mechanical locking
- Female carriers contain the maximum number of locking balls with equal load bearing characteristics, thus reducing the risk of brinelling and ensuring optimum working pressure on high impulse systems.
- Proven fatigue life of over 1,000,000 impulse cycles 1.3 x working pressure.
- Rugged rubber dust caps fitted as standard
- FFP0606/0608 and FFC0606/0608 designed to the HTMA interface requirements for interchangeability



Pressure / Flow Performance Curves



Applications

- Power Packs
- Hydraulic Tools
- Rock Breakers
- Mobile Plant & Equipment

BSP FEMALE

PART NO	Sugg Retail
FFC06-06FBF	474.72
FFC08-08FBF	841.29
FFC12-12FBF	1945.46
FFC16-16FBF	2698.50
FFC06-08FBF	386.93
FFC08-12FBF	665.67
FFC12-16FBF	1691.26

BSP MALE

PART NO	Sugg Retail
FFP06-06FBF	182.05
FFP08-08FBF	492.61
FFP12-12FBF	773.20
FFP16-16FBF	1724.61
FFP06-08FBF	159.00
FFP08-12FBF	420.64
FFP12-16FBF	805.37



Section Two

Adaptors

Adaptors

Product group 700

Hydroscand can offer a wide range of adaptors (connector nipples) for different purposes such as:

- transformation between small and large thread dimensions;
- swivel transformation for solid threads;
- connecting hoses or pipes with threads in valves, pumps and cylinders;
- transformation between different thread systems;
- bulkhead connection for hoses;
- branching pipes or hoses with T-connections;
- sealing off pipes, hoses or thread endings.

Our adaptors are normally manufactured in carbon steel of hydraulic quality, i.e. in a crack tested material. The standard surface treatment is E-Coated, which is the name of the surface treatment we use on our fittings.

This surface treatment is Cr6-free and is therefore better for both the environment and personal health. Elbow and T-adaptors are normally soldered but some are available in forged design.

When dealing with higher pressures, avoid if possible adaptors with R- or NPTF-thread since these are harder to seal and often crack the goods when tightened too excessively.

Hydroscand reserves the right to modify any or all parts of this catalogue without any prior notice.

Technical specification – adaptors

Material: Steel

BS according to 970 230Mo7Pb

DIN 1.0718

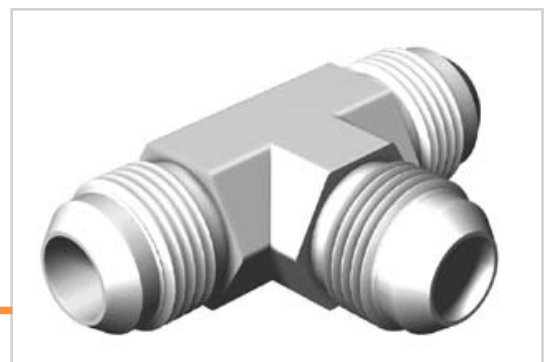
SIS 1914-04

Surface treatment:

E-coated Fe/Zn 8 P1T

Temperature range:

-40° – +155° C

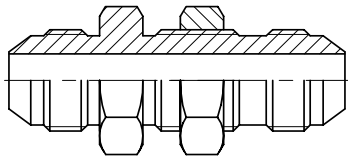


Section Two

Adaptors

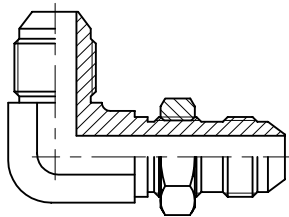
Page:-	Part No.	Description:-
Page 38	7605	JIC Male x JIC Male Bulkhead
Page 38	7606	JIC Male x JIC Male Bulkhead 90°
Page 38	7661	JIC Male x JIC Female Swivel 45°
Page 38	7660	JIC Male x JIC Female Swivel 90°
Page 39	7662	JIC Male x JIC Female x JIC Male Tee
Page 39	7663	JIC Male x JIC Male x JIC Female Tee
Page 39	7457	NPT Fixed Female x NPT Fixed Female
Page 39	7601	JIC Male x JIC Male
Page 40	7611	JIC Male x NPT Male
Page 40	7630	JIC Male x NPT Male 45°
Page 41	7620	JIC Male x NPT Male 90°
Page 41	1028	NPT Male x NPT Female Swivel
Page 41	7603	JIC Male x JIC Male x JIC Male Tee
Page 42	1037	JIC Male x NPT Female 90°
Page 42	7602	JIC Male x JIC Male 90°
Page 42	7614	JIC Male x SAE Male
Page 43	7452	NPT Male x NPT Male
Page 43	7633	JIC Male x SAE Male 45°
Page 43	7623	JIC Male x SAE Male 90°
Page 44	1093	NPT Reducing Bush
Page 44	7434	NPT Male x NPT Male 90°
Page 44	7431	NPT Male x NPT Female 90°
Page 45	7432	NPT Fixed Female x NPT Fixed Female 90°
Page 45	7505	NPT Plug
Page 45	7691	JIC Plug
Page 45	7503	SAE Plug
Page 46	7690	JIC Female Cap
Page 46	7447	NPT Male x NPT Female x NPT Female Tee
Page 46	7446	NPT Female x NPT Female x NPT Female Tee
Page 47	7616	JIC Male x BSPP Male
Page 47	7002	BSPP Male x BSPP Male
Page 48	7012	BSPP Male x BSPT Male
Page 48	7501	BSP Male Plug
Page 48	7090	BSPP Male x BSPP Male Bulkhead

JIC MALE X JIC MALE BULKHEAD



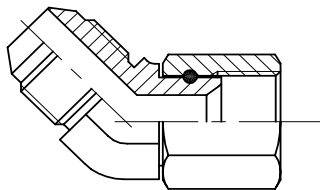
PART NUMBER	JIC	Sugg RETAIL
76050707	7/16"	58.01
76050808	1/2"	67.62
76050909	9/16"	71.20
76051212	3/4"	91.31
76051414	7/8"	137.08
76051717	1 1/16"	205.46
76052121	1 5/16"	265.51

JIC MALE X JIC MALE BULKHEAD 90°



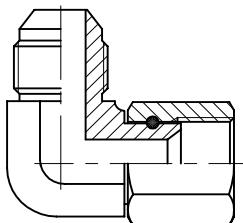
PART NUMBER	JIC	Sugg RETAIL
76060707	7/16"	104.85
76060909	9/16"	123.59
76061212	3/4"	173.19
76062121	1 5/16"	174.05

JIC MALE X JIC FEMALE SWIVEL 45°



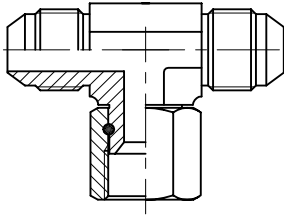
PART NUMBER	JIC	Sugg RETAIL
76610707	7/16"	77.67
76610909	9/16"	62.50
76611212	3/4"	88.24
76611414	7/8"	104.42
76611717	1 1/16"	154.48
76612121	1 5/16"	307.44
76612626	1 5/8"	464.96
76613030	1 7/8"	618.53

JIC MALE X JIC FEMALE SWIVEL 90°



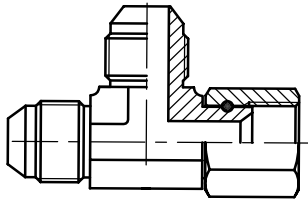
PART NUMBER	JIC	Sugg RETAIL
76600707	7/16"	64.20
76600808	1/2"	90.03
76600909	9/16"	72.50
76601212	3/4"	89.18
76601414	7/8"	127.70
76601717	1 1/16"	146.52
76602121	1 5/16"	257.15
76602626	1 5/8"	685.57
76603030	1 7/8"	1080.94

JIC MALE X JIC FEMALE X JIC MALE TEE



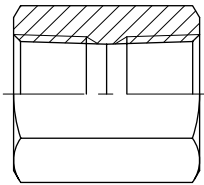
PART NUMBER	JIC	Sugg RETAIL
76620707	7/16"	116.13
76620808	1/2"	133.31
76620909	9/16"	72.94
76621212	3/4"	170.35
76621414	7/8"	163.93
76621717	1 1/16"	249.54
76622121	1 5/16"	524.14
76622626	1 5/8"	755.55

JIC MALE X JIC MALE X JIC FEMALE TEE



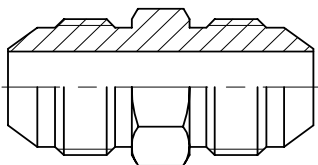
PART NUMBER	JIC	Sugg RETAIL
76630707	7/16"	104.75
76630909	9/16"	105.35
76631212	3/4"	109.24
76631414	7/8"	153.66
76631717	1 1/16"	229.55
76632121	1 5/16"	331.15
76632626	1 5/8"	806.44
76633030	1 7/8"	1075.11

NPT FIXED FEMALE X NPT FIXED FEMALE



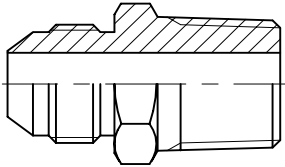
PART NUMBER	T1	T2	Sugg RETAIL
SA01008-02-02	1/8"	1/8"	31.61
74570204	1/4"	1/8"	86.42
74570404	1/4"	1/4"	32.73
74570406	3/8"	1/4"	45.07
74570606	3/8"	3/8"	40.18
74570408	1/2"	1/4"	159.41
74570808	1/2"	1/2"	60.29
74570812	3/4"	1/2"	229.52
74571212	3/4"	3/4"	142.09
74571616	1"	1"	155.28
74572020	1 1/4"	1 1/4"	390.49
74572424	1 1/2"	1 1/2"	517.89
74573232	2"	2"	636.12

JIC MALE X JIC MALE



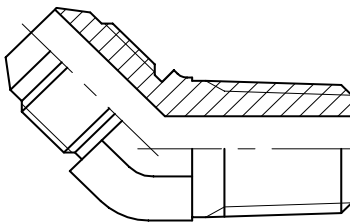
PART NUMBER	JIC	JIC	Sugg RETAIL
76010707	7/16"	7/16"	18.47
76010808	1/2"	1/2"	20.49
76010709	9/16"	1/4"	21.23
76010909	9/16"	9/16"	19.68
76010912	3/4"	9/16"	34.43
76011212	3/4"	3/4"	46.23
76011214	7/8"	3/4"	47.56
76011414	7/8"	7/8"	30.67
76011717	1 1/16"	1 1/16"	48.01
76011721	1 5/16"	1 1/16"	90.47
76012121	1 5/16"	1 5/16"	86.08
76012626	1 5/8"	1 5/8"	193.59
76013030	1 7/8"	1 7/8"	246.66

JIC MALE X NPT MALE



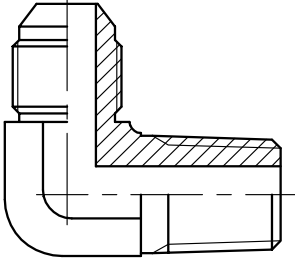
PART NUMBER	NPT	JIC	Sugg RETAIL
76110702	1/8"	17/16"	19.57
76110802	1/8"	1/2"	21.02
76110902	1/8"	9/16"	23.85
76110704	1/4"	7/16"	15.97
76110804	1/4"	1/2"	21.06
76110904	1/4"	9/16"	19.37
76111204	1/4"	3/4"	30.62
76110706	3/8"	7/16"	19.44
76110906	3/8"	9/16"	20.07
76111206	3/8"	3/4"	35.82
76111406	3/8"	7/8"	22.86
76110708	1/2"	7/16"	38.67
76110908	1/2"	9/16"	31.33
76111208	1/2"	3/4"	34.20
76111212	3/4"	3/4"	59.93
76111408	1/2"	7/8"	49.90
76111708	1/2"	3/4"	69.15
76111412	3/4"	7/8"	67.92
76111712	3/4"	1 1/16"	50.23
76112112	3/4"	1 5/16"	61.15
76111716	1"	1 1/16"	76.82
76112116	1"	1 5/16"	68.25
76112616	1"	1 5/8"	143.98
76112120	1 1/4"	1 5/16"	204.54
76112620	1 1/4"	1 5/8"	202.94
76113024	1 1/2"	1 7/8"	194.47
76114032	2"	2 1/2"	578.17

JIC MALE X NPT MALE 45°



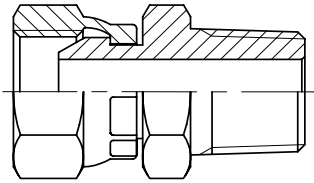
PART NUMBER	NPT T1	JIC T2	Sugg RETAIL
76300702	1/8"	7/16"	36.29
76300704	1/4"	7/16"	38.20
76300906	3/8"	9/16"	58.58
76301206	3/8"	3/4"	64.62
76300908	1/2"	9/16"	130.28
76301208	1/2"	3/4"	62.78
76301712	3/4"	1 1/16"	113.37
76302112	3/4"	1 5/16"	684.65
76302116	1"	1 5/16"	228.51

JIC MALE X NPT MALE 90°



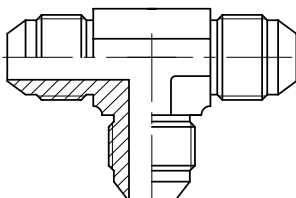
PART NUMBER	NPT	JIC	Sugg RETAIL
76200702	1/8"	7/16"	46.45
76200704	1/4"	7/16"	58.93
76200904	1/4"	9/16"	65.25
76201204	1/4"	3/4"	115.09
76200706	3/8"	7/16"	81.48
76200906	3/8"	9/16"	69.00
76201206	3/8"	3/4"	139.82
SA01025-06-10	3/8"	7/8"	128.34
SA01025-06-12	3/8"	1 1/16"	181.08
76200708	1/2"	7/16"	99.36
76200908	1/2"	9/16"	81.74
76201208	1/2"	3/4"	71.02
SA01025-08-10	1/2"	7/8"	122.73
76201212	3/4"	3/4"	122.56
SA01025-12-10	3/4"	7/8"	123.68
76201712	3/4"	1 1/16"	102.49
76202112	3/4"	1 5/16"	221.51
76201716	1"	1 3/16"	177.34
76202116	1"	1 5/16"	319.65
76202616	1"	1 5/8"	512.33
76202620	1 1/4"	1 5/8"	413.77
76203024	1 1/2"	1 7/8"	922.48
SA01025-32-32	2"	2 1/2"	954.56

NPT MALE X NPT FEMALE SWIVEL



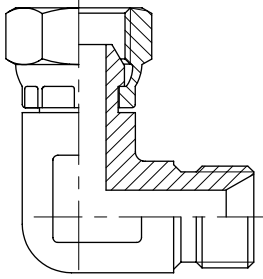
PART NUMBER	T1	T2	Sugg RETAIL
SA01028-02-02	1/8"	1/8"	39.81
SA01028-02-04	1/8"	1/4"	28.80
SA01028-04-04	1/4"	1/4"	38.59
SA01028-04-06	1/4"	3/8"	44.77
SA01028-06-06	3/8"	3/8"	46.53
SA01028-06-08	3/8"	1/2"	63.26
SA01028-08-06	1/2"	3/8"	43.79
SA01028-08-08	1/2"	1/2"	60.03
SA01028-08-12	1/2"	3/4"	93.14
SA01028-12-08	3/4"	1/2"	85.84
SA01028-12-12	3/4"	3/4"	95.55
SA01028-12-16	3/4"	1"	156.19
SA01028-16-12	1"	3/4"	149.78
SA01028-16-16	1"	1"	160.21
SA01028-16-20	1"	1 1/4"	279.61
SA01028-20-20	1 1/4"	1 1/4"	226.26
SA01028-24-24	1 1/2"	1 1/2"	385.00
SA01028-32-32	2"	2"	553.53

JIC MALE X JIC MALE X JIC MALE TEE



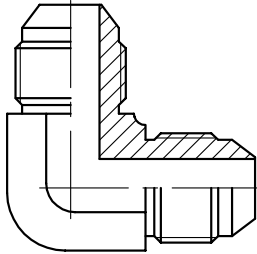
PART NUMBER	JIC	Sugg RETAIL
76030707	7/16"	90.37
76030909	9/16"	89.55
76031212	3/4"	130.97
76031414	7/8"	146.37
76031717	1 1/16"	160.72
76032121	1 5/16"	231.40

JIC MALE X NPT FEMALE 90°



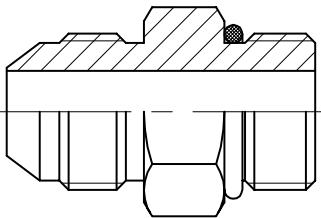
PART NUMBER	NPT	JIC	Sugg RETAIL
SA01037-02-02	1/8"	1/8"	72.40
SA01037-02-04	1/8"	1/4"	66.32
SA01037-04-04	1/4"	1/4"	62.10
SA01037-04-06	1/4"	3/8"	118.90
SA01037-06-06	3/8"	3/8"	88.76
SA01037-06-08	3/8"	1/2"	126.35
SA01037-08-06	1/2"	3/8"	120.83
SA01037-08-08	1/2"	1/2"	119.97
SA01037-08-12	1/2"	3/4"	183.68
SA01037-12-06	3/4"	3/8"	137.67
SA01037-12-08	3/4"	1/2"	168.61
SA01037-12-12	3/4"	3/4"	175.43
SA01037-16-16	1"	1"	305.04
SA01037-16-20	1"	1 1/4"	508.79
SA01037-20-16	1 1/4"	1"	563.31
SA01037-20-20	1 1/4"	1 1/4"	554.37
SA01037-24-24	1 1/2"	1 1/2"	758.92
SA01037-32-32	2"	2"	1165.82

JIC MALE X JIC MALE 90°



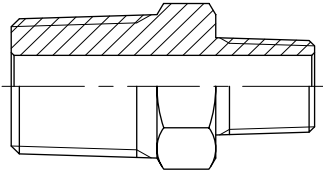
PART NUMBER	JIC	Sugg RETAIL
76020707	7/16"	44.44
76020909	9/16"	48.83
76021212	3/4"	91.44
76021414	7/8"	87.45
76021717	1 1/16"	108.24
76022121	1 5/16"	124.95
SA01039-20-20	1 5/8"	523.43

JIC MALE X SAE MALE



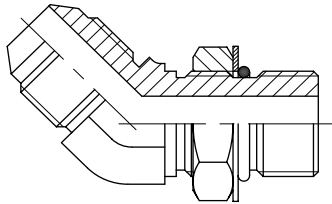
PART NUMBER	SAE	JIC	Sugg RETAIL
76140707	7/16"	7/16"	22.08
76140907	7/16"	9/16"	26.30
76140708	1/2"	7/16"	23.72
76140808	1/2"	1/2"	26.82
76140709	9/16"	7/16"	22.68
76140909	9/16"	9/16"	28.52
76141209	9/16"	3/4"	28.73
76140912	3/4"	9/16"	34.88
76141212	3/4"	3/4"	43.40
76141712	3/4"	1 1/16"	59.79
76141214	7/8"	3/4"	51.53
76141414	7/8"	7/8"	47.77
76141714	7/8"	1 1/16"	67.76
76141217	1 1/16"	3/4"	61.54
76141417	1 1/16"	7/8"	66.67
76141717	1 1/16"	1 1/16"	62.28
76142117	1 1/16"	1 5/16"	103.50
76141721	1 5/16"	3/4"	91.67
76142121	1 5/16"	1 5/16"	114.67
76142621	1 5/16"	1 5/8"	172.19
76142626	1 5/8"	1 5/8"	159.07
76144040	2 1/2"	2 1/2"	507.01

NPT MALE X NPT MALE



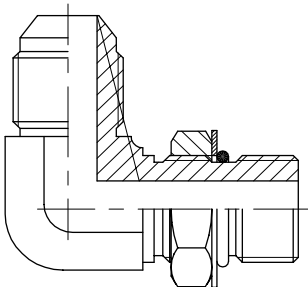
PART NUMBER	T1	T2	Sugg RETAIL
74520202	1/8"	1/8"	32.86
74520204	1/4"	1/8"	25.48
74520404	1/4"	1/4"	18.16
74520406	3/8"	1/4"	31.35
74520606	3/8"	3/8"	26.57
74520408	1/2"	1/4"	40.05
74520608	1/2"	3/8"	51.75
74520808	1/2"	1/2"	44.68
74520612	3/4"	3/8"	57.35
74520812	3/4"	1/2"	53.22
74521212	3/4"	3/4"	62.96
74521216	1"	3/4"	103.50
74521616	1"	1"	131.49
74522020	1 1/4"	1 1/4"	183.57
74522424	1 1/2"	1 1/2"	260.77
74523232	2"	2"	575.21

JIC MALE X SAE MALE 45°



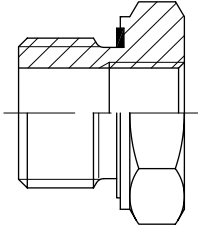
PART NUMBER	SAE	JIC	Sugg RETAIL
SA01047-04-04	7/16"	7/16"	93.46
76330909	9/16"	9/16"	103.97
SA01047-06-08	9/16"	3/4"	139.93
SA01047-08-06	3/4"	9/16"	149.10
76331212	3/4"	3/4"	94.01
SA01047-10-10	7/8"	7/8"	207.83
SA01047-12-12	1 1/16"	1 1/16"	217.10
SA01047-12-16	1 1/16"	1 5/16"	217.35
76331721	1 5/16"	1 1/16"	325.52
76332121	1 5/16"	1 5/16"	266.77
SA01047-20-16	1 5/8"	1 5/16"	193.20
SA01047-20-20	1 5/8"	1 5/8"	908.34

JIC MALE X SAE MALE 90°



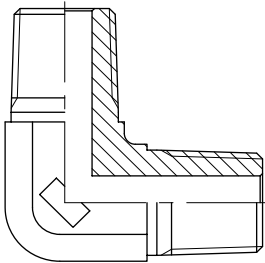
PART NUMBER	SAE T1	JIC T2	Sugg RETAIL
76230707	7/16"	7/16"	73.90
76230907	7/16"	9/16"	111.14
76230709	9/16"	7/16"	97.96
76230909	9/16"	9/16"	84.50
76231209	9/16"	3/4"	56.88
76230912	3/4"	9/16"	162.20
76231212	3/4"	3/4"	115.00
76231412	3/4"	7/8"	122.48
SA01048-08-12	3/4"	1 1/16"	217.35
SA01048-10-06	7/8"	9/16"	166.35
76231214	7/8"	3/4"	140.73
76231414	7/8"	7/8"	110.09
SA01048-10-12	7/8"	1 1/16"	231.07
76231217	1 1/16"	3/4"	179.00
76231412	1 1/16"	7/8"	122.48
76231717	1 1/16"	1 1/16"	174.01
76232117	1 1/16"	1 5/16"	261.86
SA01048-16-12	1 5/16"	1 1/16"	380.97
76232121	1 5/16"	1 5/16"	302.96
SA01048-16-20	1 5/16"	1 5/8"	722.61
76232626	1 5/8"	1 5/8"	526.44
SA01048-24-24	1 7/8"	1 7/8"	985.46

NPT REDUCING BUSH



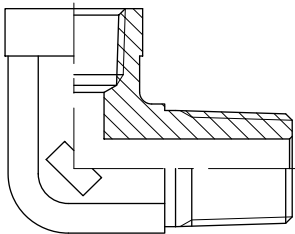
PART NUMBER	NPT T1	NPT T2	Sugg RETAIL
SA01093-04-02	1/4"	1/8"	20.23
SA01093-06-02	3/8"	1/8"	34.78
SA01093-06-04	3/8"	1/4"	26.81
SA01093-08-02	1/2"	1/8"	37.86
SA01093-08-04	1/2"	1/4"	40.30
SA01093-08-06	1/2"	3/8"	28.74
SA01093-12-04	3/4"	1/4"	52.84
SA01093-12-06	3/4"	3/8"	54.29
SA01093-12-08	3/4"	1/2"	49.21
SA01093-16-06	1"	3/8"	66.05
SA01093-16-08	1"	1/2"	74.78
SA01093-16-12	1"	3/4"	80.43
SA01093-20-12	1 1/4"	3/4"	161.03
SA01093-20-16	1 1/4"	1"	170.55
SA01093-24-12	1 1/2"	3/4"	275.75
SA01093-24-16	1 1/2"	1"	265.36
SA01093-24-20	1 1/2"	1 1/4"	255.85
SA01093-32-16	2"	1"	425.43
SA01093-32-20	2"	1 1/4"	474.25
SA01093-32-24	2"	1 1/2"	458.38

NPT MALE X NPT MALE 90°



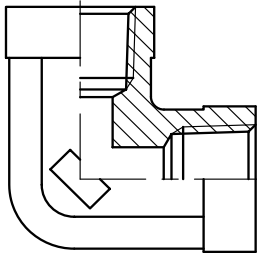
PART NUMBER	NPT T1	NPT T2	Sugg RETAIL
SA01094-02-02	1/8"	1/8"	59.12
SA01094-02-04	1/4"	1/8"	47.20
74340404	1/4"	1/4"	48.62
74340606	3/8"	3/8"	74.96
74340806	1/2"	3/8"	91.82
74340808	1/2"	1/2"	102.07
74341208	3/4"	1/2"	80.51
74341212	3/4"	3/4"	137.74
74341616	1"	1"	248.35
SA01094-20-20	1 1/4"	1 1/4"	266.69

NPT MALE X NPT FEMALE 90°



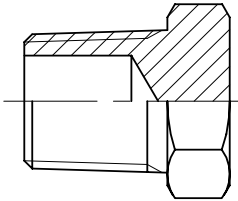
PART NUMBER	NPT T1	NPT T2	Sugg RETAIL
74310202	1/8"	1/8"	55.26
74310404	1/4"	1/4"	122.06
74310606	3/8"	3/8"	110.37
74310808	1/2"	1/2"	110.87
74311212	3/4"	3/4"	207.26
SA01095-16-16	1"	1"	331.15
SA01095-20-20	1 1/4"	1 1/4"	704.61

NPT FIXED FEMALE X NPT FIXED FEMALE 90°



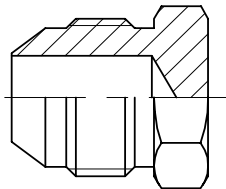
PART NUMBER	NPT	Sugg RETAIL
74320202	1/8"	57.52
74320404	1/4"	195.13
74320606	3/8"	83.04
74320808	1/2"	130.02
74321212	3/4"	212.82
74321616	1"	240.76
SA01097-20-20	1 1/4"	614.78
SA01097-24-24	1 1/2"	679.40

NPT MALE PLUG



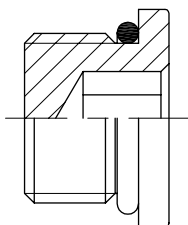
PART NUMBER	NPT	Sugg RETAIL
75050002	1/8"	16.17
75050004	1/4"	14.37
75050006	3/8"	21.00
75050008	1/2"	23.62
75050012	3/4"	38.63
75050016	1"	67.85
75050020	1 1/4"	146.53
SA01219-24	1 1/2"	181.32
SA01219-32	2"	311.35

JIC MALE PLUG



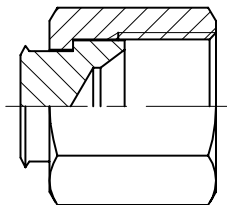
PART NUMBER	JIC	Sugg RETAIL
76910007	7/16"	17.03
76910008	1/2"	19.08
76910009	9/16"	17.25
76910012	3/4"	23.86
76910014	7/8"	39.03
76910017	1 1/16"	49.12
76910021	1 5/16"	88.03
76910026	1 5/8"	114.22
76910030	1 7/8"	143.15

SAE MALE PLUG



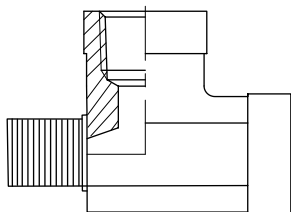
PART NUMBER	SAE	Sugg RETAIL
SA01228-04	7/16"	12.80
75035009	9/16"	17.84
75035012	3/4"	23.64
75035014	7/8"	26.50
SA01228-12	1 1/16"	43.33
SA01228-16	1 5/16"	53.13

JIC FEMALE CAP



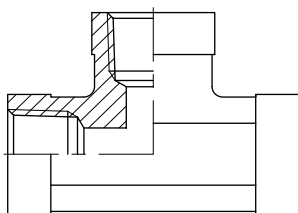
PART NUMBER	JIC	Sugg RETAIL
76900007	7/16"	36.57
76900008	1/2"	25.51
76900009	9/16"	45.80
76900012	3/4"	46.13
76900014	7/8"	50.98
76900017	1 1/16"	74.50
76000021	1 5/16"	120.22
76900026	1 5/8"	201.58
76900030	1 7/8"	394.76

NPT MALE X NPT FEMALE X NPT FEMALE TEE



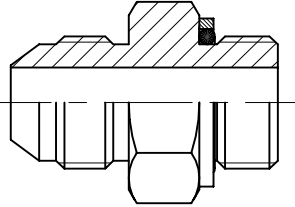
PART NUMBER	NPT	Sugg RETAIL
74470202	1/8"	327.58
74470404	1/4"	214.94
74470606	3/8"	410.47
74470808	1/2"	460.43
74471212	3/4"	273.45
74471616	1"	812.65
SA15861-20-20	1 1/4"	824.68
74472424	1 1/2"	1287.54

NPT FEMALE X NPT FEMALE X NPT FEMALE TEE



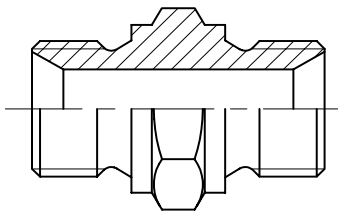
PART NUMBER	NPT	Sugg RETAIL
74460202	1/8"	230.24
74460404	1/4"	291.84
74460606	3/8"	166.16
74460808	1/2"	196.70
74461212	3/4"	293.86
74461616	1"	469.48
SA15862-20-20	1 1/4"	807.29
SA15862-24-24	1 1/2"	989.28
74463232	2"	1466.25

JIC MALE X BSPP MALE



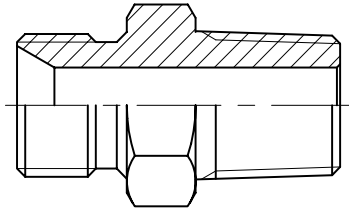
PART NUMBER	BSP	JIC	Sugg RETAIL
76160702	1/8"	7/16"	28.42
76160704	1/4"	7/16"	19.09
76160904	1/4"	9/16"	29.33
76160706	3/8"	7/16"	23.29
76160906	3/8"	9/16"	22.04
76161206	3/8"	3/4"	37.08
76160708	1/2"	7/16"	32.25
76160908	1/2"	9/16"	42.00
76161208	1/2"	3/4"	50.20
76161408	1/2"	7/8"	43.77
76161708	1/2"	1 1/16"	45.84
76161410	5/8"	7/8"	70.33
76161212	3/4"	3/4"	76.98
76161412	3/4"	7/8"	82.66
76161712	3/4"	1 1/16"	73.78
76161716	1"	1 1/16"	89.53
76162116	1"	1 5/16"	148.70
76162616	1 1/4"	1 5/16"	160.14
76162620	1 1/4"	1 5/8"	297.74
76163020	1 1/4"	1 7/8"	277.24

BSPP MALE X BSPP MALE



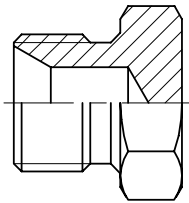
PART NUMBER	BSP		Sugg RETAIL
70020202	1/8"	1/8"	13.54
70020204	1/8"	1/4"	21.22
70020404	1/4"	1/4"	16.62
70020406	1/4"	3/8"	23.47
70020408	1/4"	1/2"	22.43
70020606	3/8"	3/8"	30.05
70020608	3/8"	1/2"	23.44
70020612	3/8"	3/4"	49.73
70020808	1/2"	1/2"	25.35
70020810	1/2"	5/8"	51.44
70020812	1/2"	3/4"	48.25
70020816	1/2"	1"	68.20
70021010	5/8"	5/8"	65.21
70021012	5/8"	3/4"	90.49
70021212	3/4"	3/4"	36.88
70021216	3/4"	1"	64.62
70021616	1"	1"	96.90
70021620	1"	1 1/4"	223.58
70021624	1"	1 1/2"	167.58
70022020	1 1/4"	1 1/4"	133.72
70022024	1 1/4"	1 1/2"	272.00
70022424	1 1/2"	1 1/2"	270.78
70023232	2"	2"	616.47

BSPP MALE X BSPT MALE



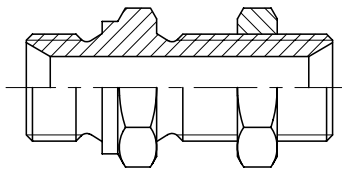
PART NUMBER	BSP T1	BSPT T2	Sugg RETAIL
70120202	1/8"	1/8"	15.55
70120204	1/8"	1/4"	24.28
70120404	1/4"	1/4"	17.32
70120406	1/4"	3/8"	17.99
70120604	3/8"	1/4"	29.84
70120606	3/8"	3/8"	21.39
70120608	3/8"	1/2"	27.50
70120804	1/2"	1/4"	49.59
70120806	1/2"	3/8"	36.23
70120808	1/2"	1/2"	32.48
70120810	1/2"	5/8"	39.72
70120812	1/2"	3/4"	42.65
70121208	3/4"	1/2"	43.55
70121212	3/4"	3/4"	30.36
70121612	1"	3/4"	130.54
70121616	1"	1"	117.69
70122020	1 1/4"	1 1/4"	179.43
70122424	1 1/2"	1 1/2"	279.04
SA50028-32-32	2"	2"	518.96

BSP MALE PLUG



PART NUMBER	BSP	Sugg RETAIL
75010004	1/4"	10.56
75010006	3/8"	15.79
75010008	1/2"	33.20
75010012	3/4"	31.87
75010016	1	73.72
A20BM	1 1/4"	142.40
75010024	1 1/2"	262.89

BSPP MALE X BSPP MALE BULKHEAD



PART NUMBER	BSP	Sugg RETAIL
70900404	1/4"	34.20
70900606	3/8"	62.93
70900808	1/2"	88.58
A10BM10BM-BH	5/8"	124.95
A12BM12BM-BH	3/4"	141.54
A16BM16BM-BH	1"	179.79

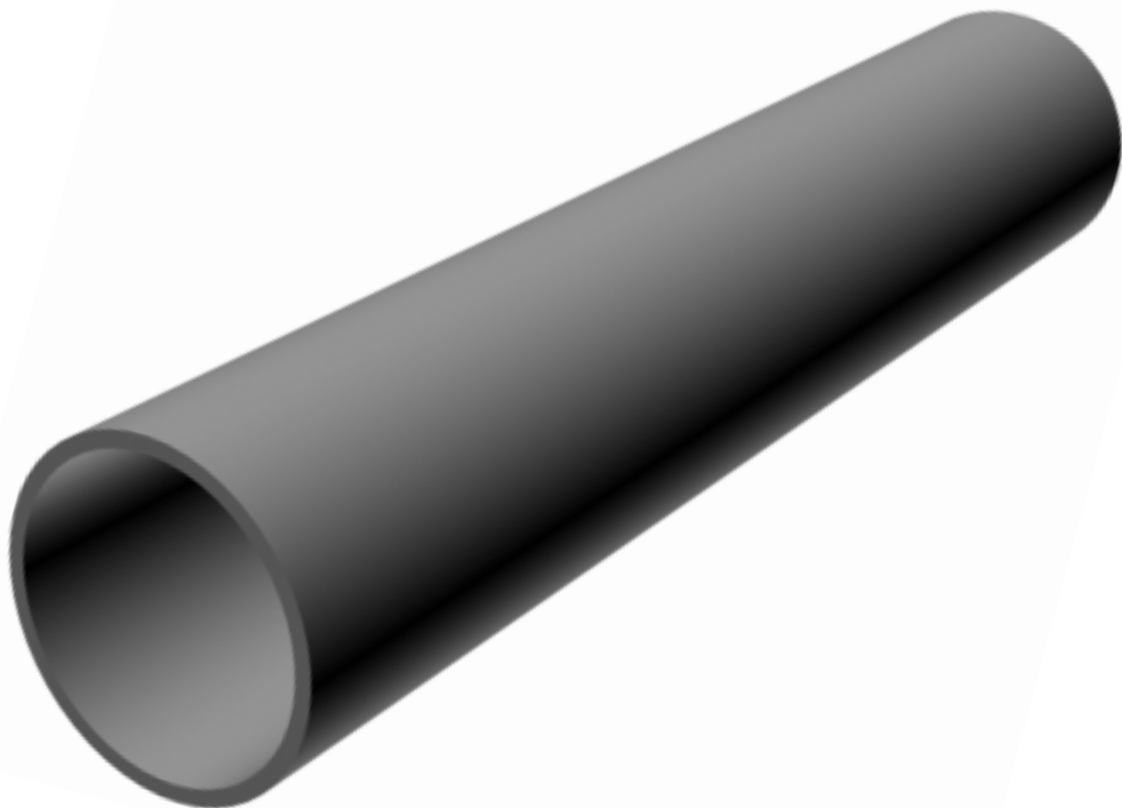


Section Three

Steel & Zista Tube

Pipes to suit a wide spectra of materials for all sorts of applications in hydraulic and pneumatic systems.

NOTE! Seamless stainless steel pipes can in some applications be replaced by welded stainless steel pipes. The customer decides in what application the seamless pipe can be replaced by a welded one. The manufacturer guarantees a weldfactor of $V=1,0$. In the pneumatic catalogue You can find information about plastic pipes.



ANNEALED, PHOSPHATED, OILED AND PLUGGED DIN 2391/C ST37.4



SIZE OD X WT	WEIGHT PER METRE / KG	DESIGN WORKING PRESSURE IN BARS	PRICE PER METRE
6 X 1	0.123	389	51.06
6 X 1.5	0.166	549	58.90
6 X 2	0.197	692	93.79
8 X 1	0.173	333	66.37
8 X 1.5	0.240	431	74.82
8 X 2	0.296	530	133.85
8 X 2.5	0.339	658	325.63
10 X 1	0.222	282	71.19
10 X 1.5	0.314	373	72.60
10 X 2	0.396	478	111.09
12 X 1	0.271	235	99.36
12 X 1.5	0.388	353	124.38
12 X 2	0.493	409	120.01
14 X 2	0.592	403	154.51
15 X 1.5	0.499	282	145.37
15 X 2	0.641	376	145.37
16 X 1.5	0.536	264	116.05
16 X 2	0.691	353	140.67
18 X 1.5	0.610	235	153.53
18 X 2	0.789	313	194.34
20 X 2	0.888	282	161.29
20 X 2.5	1.079	353	193.07
22 X 2	0.986	256	198.11
25 X 2	1.134	226	170.67
25 X 2.5	1.387	282	250.13
25 X 3	1.682	338	344.82
28 X 2	1.282	201	209.89
30 X 2.5	1.695	235	291.62
30 X 3	1.998	282	292.31
35 X 3	2.367	242	245.02
38 X 3	2.589	223	431.25
38 X 5	4.069	371	568.25
42 X 2	1.973	134	426.68
42 X 3	2.885	201	420.77

BRAKE LINE AND REFRIGERATION TUBE - ZISTA (WELDING TUBING, ZINC GALVANISED)



SIZE OD X WT	WEIGHT PER METRE / KG	DESIGN WORKING PRESSURE IN BARS	PRICE PER METRE
4.75 X 0.75	0.070	299	58.45
6.35 X 0.70	0.099	239	40.93
9.52 X 0.7	0.190	220	81.85
12.7 X 1.0	0.288	190	105.29
6.0 X 0.7	0.091	253	48.20
8.0 X 0.7	0.126	190	79.11
10.0 X 1.0	0.222	236	85.00
12.0 X 1.0	0.271	196	122.34

Quick service

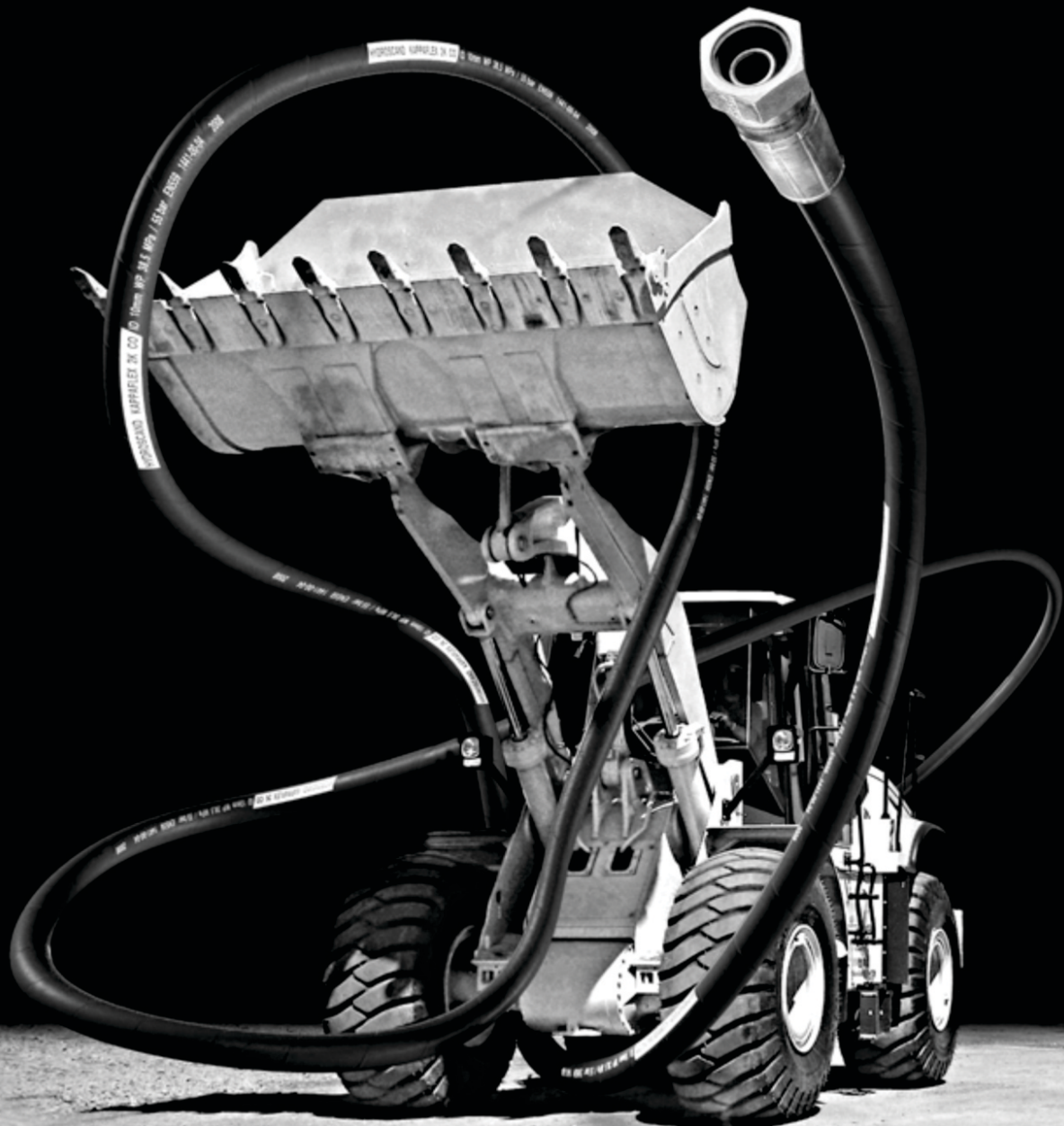
With over 80 depots and more than 400 retailers within the Hydros cand Group, we can always supply the service that is required, whenever, wherever. Each depot offers complete service with its own store, stock, modern machinery, workshop and "know-how" within hose and fluid connectors.

Quality

Our strive to build strong and long-term relationships with our clients demands high and constant quality. By quality, we mean that our products and services will meet and even surpass their requirements. Since 1999 the group is ISO certified according to SS-EN ISO-9001:2000.

Product development and construction

In the Hydros cand Design and Test Centre we are constantly improving the standard of product and components to satisfy specific needs and requirements.





Section Four

Compression Fittings & Accessories

COMPRESSION FITTINGS

TUBE O.D.	THREAD SIZE ON NUT	STD THREAD ON FITTING METRIC	STD THREAD ON FITTING BSP	STD THREAD ON FITTING NPT	WORKING PRESSURE BARS
04 LL	M 8 X 1	M 8 X 1	R 1/8"	NPT 1/8"	100
06 LL	M 10 X 1	M 10 X 1	R 1/8"	NPT 1/8"	100
08 LL	M 10 X 1	M 10 X 1	R 1/8"	NPT 1/8"	100
06 L	M 12 X 1.5	M 10 X 1	R 1/8"	NPT 1/8"	250
08 L	M 14 X 1.5	M 12 X 1.5	R 1/4"	NPT 1/4"	250
10 L	M 16 X 1.5	M 14 X 1.5	R 1/4"	NPT 1/4"	250
12 L	M 18 X 1.5	M 16 X 1.5	R 3/8"	NPT 3/8"	250
15 L	M 22 X 1.5	M 18 X 1.5	R 1/2"	NPT 1/2"	250
18 L	M 26 X 1.5	M 22 X 1.5	R 1/2"	NPT 1/2"	160
22 L	M 30 X 2	M 26 X 1.5	R 3/4"	NPT 3/4"	160
28 L	M 36 X 2	M 33 X 2	R 1"	NPT 1"	100
35 L	M 45 X 2	M 42 X 2	R 1-1/4"	NPT 1-1/4"	100
42 L	M 52 X 2	M 48 X 2	R 1-1/2"	NPT 1-1/2"	100
06 S	M 14 X 1.5	M 12 X 1.5	R 1/4"	NPT 1/4"	630
08 S	M 16 X 1.5	M 14 X 1.5	R 1/4"	NPT 1/4"	630
10 S	M 18 X 1.5	M 16 X 1.5	R 3/8"	NPT 3/8"	630
12 S	M 20 X 1.5	M 18 X 1.5	R 3/8"	NPT 3/8"	630
14 S	M 22 X 1.5	M 20 X 1.5	R 1/2"	NPT 1/2"	630
16 S	M 24 X 1.5	M 22 X 1.5	R 1/2"	NPT 1/2"	400
20 S	M 30 X 2	M 27 X 2	R 3/4"	NPT 3/4"	400
25 S	M 36 X 2	M 33 X 2	R 1"	NPT 1"	400
30 S	M 42 X 2	M 42 X 2	R 1-1/4"	NPT 1-1/4"	250
38 S	M 52 X 2	M 48 X 2	R 1-1/2"	NPT 1-1/2"	250

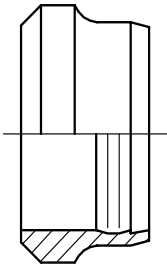
LL - EXTRA LIGHT SERIES
 L - LIGHT SERIES
 S - HEAVY SERIES

Section Four

Compression Fittings & Accessories

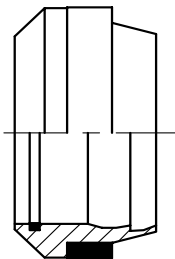
Description:-	Page:-
D	54
D-ES-4	54
ESV	55
EGE	55
EL	55
ET	56
EW	56
GAI	56
G	57
GE	57-58
K	58
GR	59
M	59
MAV	60
MAV-EV	60
RED	60
RHD	61
RI	61
SV	62
T	62
VSTI	62
VKAM	63
W	63
WHO	63
WE	64
WSV	64
CLAMPS	65
MINIMESS FITTINGS	65
TEST POINTS	66

CUTTING RING



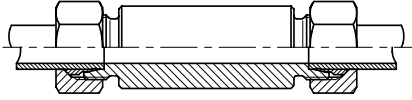
PART NO.	SIZE	SUGGESTED RETAIL
D04LL	4MM	5.22
D06LL	6MM	8.38
D08LL	8MM	8.56
D06L/S	6MM	9.91
D08L/S	8MM	6.68
D10L/S	10MM	7.61
D12L/S	12MM	10.10
D15L	15MM	14.27
D18L	18MM	17.25
D22L	22MM	27.84
D28L	28MM	27.08
D35L	35MM	64.60
D42L	42MM	119.45
D14S	14MM	15.02
D16S	16MM	14.35
D20S	20MM	17.94
D25S	25MM	30.58
D30S	30MM	28.98
D38S	38MM	61.00

CUTTING RING ES-4



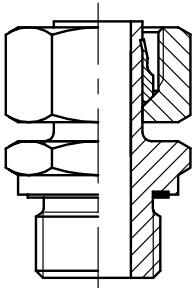
PART NO.	SIZE	SUGGESTED RETAIL
D06L/S - ES-4	6MM	25.83
D08L/S - ES-4	8MM	24.81
D10L/S - ES-4	10MM	29.35
D12L/S - ES-4	12MM	36.28
D15L - ES-4	15MM	46.90
D18L - ES-4	18MM	64.90
D22L - ES-4	22MM	124.13
D28L - ES-4	28MM	57.63
D35L - ES-4	35MM	478.69
D42L - ES-4	42MM	170.98
S S		
D14 - E -4	14MM	38.65
D16S - ES-4	16MM	95.78
D20S - ES-4	20MM	58.40
D25S - ES-4	25MM	162.45
D30S - ES-4	30MM	304.24
D38S - ES-4	38MM	185.22

WELDING BULKHEAD COUPLING



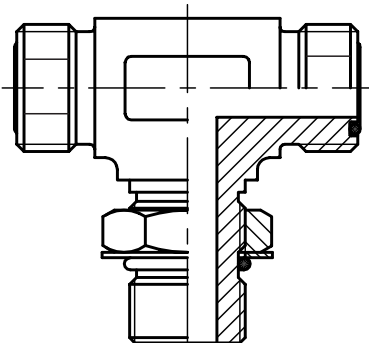
PART NO.	SIZE	SUGGESTED RETAIL
ESV10L	10MM	97.35
ESV12L	12MM	453.64
ESV15L	15MM	307.43
ESV18L	18MM	542.60
ESV16S	16MM	419.11
ESV20S	20MM	401.61

STRAIGHT STUD STANDPIPE ADAPTOR



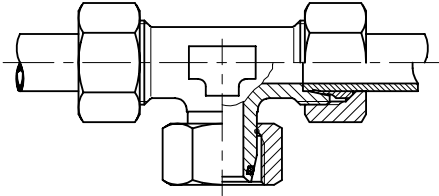
PART NO.	SIZE	SUGGESTED RETAIL
EGE06LR-ED	6MM X 1/8"	89.36
EGE08LR-ED	8MM X 1/4"	90.31
EGE10LR-ED	10MM X 1/4"	136.85
EGE12LR-ED	12MM X 3/8"	110.72
EGE15LR-ED	15MM X 1/2"	145.54
EGE18LR-ED	18MM X 1/2"	198.46
EGE22LR-ED	22MM X 3/4"	299.97
EGE28LR-ED	28MM X 1"	389.25
EGE35LR-ED	35MM X 1-1/4"	584.53
EGE42LR-ED	42MM X 1-1/2"	566.85
EGE08SR-ED	8MM X 1/4"	117.69
EGE10SR-ED	10MM X 3/8"	99.96
EGE12SR-ED	12MM X 3/8"	122.69
EGE16SR-ED	16MM X 1/2"	271.46
EGE20SR-ED	20MM X 3/4"	321.05
EGE25SR-ED	25MM X 1"	444.60
EGE30SR-ED	30MM X 1-1/4"	563.27
EGE38SR-ED	38MM X 1-1/2"	927.62

ADJUSTABLE BARREL TEE



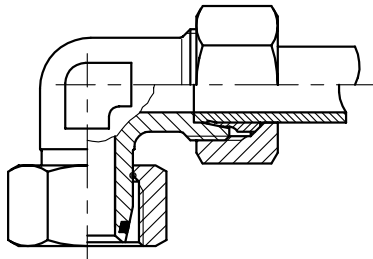
PART NO.	SIZE	SUGGESTED RETAIL
EL06L	6MM	229.14
EL08L	8MM	171.61
EL10L	10MM	289.80
EL12L	12MM	315.01
EL15L	15MM	432.35
EL18L	18MM	596.11
EL22L	22MM	656.06
EL28L	28MM	1182.71
EL35L	35MM	1051.25
EL42L	42MM	1595.40
EL06S	6MM	222.33
EL08S	8MM	228.07
EL10S	10MM	258.50
EL12S	12MM	319.84
EL14S	14MM	596.51
EL16S	16MM	612.46
EL20S	20MM	539.56
EL25S	25MM	1061.24
EL30S	30MM	1788.10
EL38S	38MM	2599.68

ADJUSTABLE BRANCH TEE



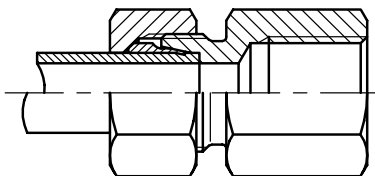
PART NO.	SIZE	SUGGESTED RETAIL
ET06L	6MM	255.43
ET08L	8MM	184.44
ET10L	10MM	222.42
ET12L	12MM	344.57
ET15L	15MM	393.27
ET18L	18MM	541.78
ET22L	22MM	583.22
ET28L	28MM	823.73
ET35L	35MM	1230.29
ET42L	42MM	1752.04
ET06S	6MM	238.89
ET08S	8MM	327.60
ET10S	10MM	241.02
ET12S	12MM	316.32
ET14S	14MM	146.20
ET16S	16MM	580.43
ET20S	20MM	906.95
ET25S	25MM	902.39
ET30S	30MM	1254.40
ET38S	38MM	1624.73

ADJUSTABLE ELBOW



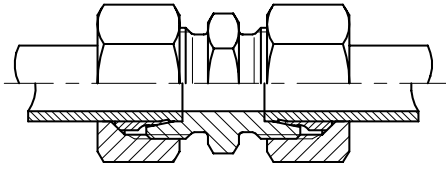
PART NO.	SIZE	SUGGESTED RETAIL
EW06L	6MM	161.29
EW08L	8MM	125.06
EW10L	10MM	127.90
EW12L	12MM	224.81
EW15L	15MM	281.36
EW18L	18MM	328.00
EW22L	22MM	495.85
EW28L	28MM	757.06
EW35L	35MM	1071.36
EW42L	42MM	1285.17
EW06S	6MM	125.63
EW08S	8MM	221.32
EW10S	10MM	124.22
EW12S	12MM	205.06
EW14S	14MM	82.50
EW16S	16MM	372.70
EW20S	20MM	452.62
EW25S	25MM	850.16
EW30S	30MM	809.37
EW38S	38MM	392.68

FEMALE STUD COUPLING



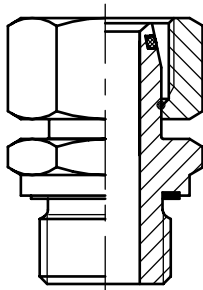
PART NO.	SIZE	SUGGESTED RETAIL
GAI06LR	6MM X 1/8"	60.29
GAI08LR	8MM X 1/4"	50.03
GAI10LR	10MM X 1/4"	61.46
GAI12LR	12MM X 3/8"	82.48
GAI15LR	15MM X 1/2"	134.23
GAI18LR	18MM X 1/2"	134.21
GAI22LR	22MM X 3/4"	223.81
GAI28LR	28MM X 1"	285.41
GAI12SR	12MM X 1/2"	115.06
GAI16SR	16MM X 1/2"	157.32
GAI20SR	20MM X 3/8"	366.61
GAI25SR	25MM X 1"	702.65
GAI30SR	30MM X 1/4"	771.06

STRAIGHT COUPLING



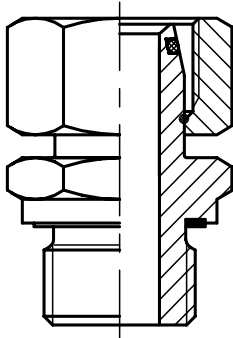
PART NO.	SIZE	SUGGESTED RETAIL
G04LL	4MM	56.56
G06LL	6MM	70.98
G08LL	8MM	43.18
G06L	6MM	59.47
G08L	8MM	54.42
G10L	10MM	67.70
G12L	12MM	89.65
G15L	15MM	117.77
G18L	18MM	182.97
G22L	22MM	259.31
G28L	28MM	388.82
G35L	35MM	571.15
G42L	42MM	769.89
G06S	6MM	62.35
G08S	8MM	79.21
G10S	10MM	98.67
G12S	12MM	57.09
G14S	14MM	174.23
G16S	16MM	189.30
G20S	20MM	251.03
G25S	25MM	509.08
G30S	30MM	630.45
G38S	38MM	967.20

STRAIGHT MALE STUD COUPLING



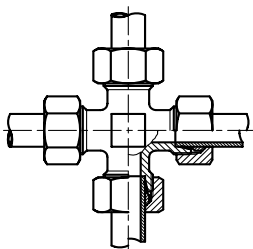
PART NO.	SIZE	SUGGESTED RETAIL
GE04LL 1/8"	4MM X 1/8"	63.86
GE06LLR 1/8"	6MM X 1/8"	25.76
GE08LLR 1/8"	8MM X 1/8"	24.01
GE06LR 1/4"	6MM X 1/4"	48.21
GE08LR 3/8"	8MM X 3/8"	45.71
GE08LR 1/2"	8MM X 1/2"	82.55
GE10LR 3/8"	10MM X 3/8"	70.08
GE10LR 1/2"	10MM X 1/2"	114.13
GE12LR 1/4"	12MM X 1/4"	48.52
GE12LR 1/2"	12MM X 1/2"	84.26
GE15LR 3/8"	15MM X 3/8"	109.49
GE10SR 1/4"	10MM X 1/4"	70.79
GE10SR 1/2"	10MM X 1/2"	111.30
GE12SR 1/4"	12MM X 1/4"	137.31
GE12SR 1/2"	12MM X 1/2"	94.09
GE16SR 3/8"	16MM X 3/8"	202.91
GE16SR 3/4"	16MM X 3/4"	151.90
GE20SR 1/2"	20MM X 1/2"	217.34
GE25SR 3/4"	25MM X 3/4"	390.32
GE30SR 1"	30MM X 1"	532.63
GE38SR 1 1/4"	38MM X 1-1/4"	750.34

STRAIGHT MALE STUD COUPLING (CONT.)



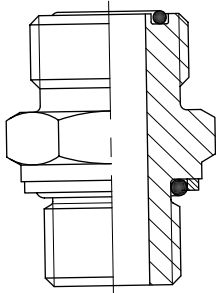
PART NO.	SIZE	SUGGESTED RETAIL
GE06LM-ED	6MM X M10X1	15.73
GE08LM-ED	8MM X M12X1.5	39.26
GE10LM-ED	10MM X M14X1.5	66.02
GE12LM-ED	12MM X M16X1.5	69.46
GE15LM-ED	15MM X M18X1.5	103.67
GE18LM-ED	18MM X M22X1.5	93.63
GE22LM-ED	22MM X M26X1.5	208.32
GE28LM-ED	28MM X M33X2	311.55
GE35LM-ED	35MM X M42X2	168.66
GE06SM-ED	6MM X M12X1.5	42.70
GE08SM-ED	8MM X M14X1.5	57.40
GE10SM-ED	10MM X M16X1.5	59.03
GE12SM-ED	12MM X M18X1.5	103.44
GE16SM-ED	16MM X M22X1.5	87.84
GE20SM ED	20MM X M26X1.5	252.60
GE06LL 1/8" NPT	6MM X 1/8"	56.97
GE08LL 1/8" NPT	8MM X 1/8"	46.17
GE06L 1/8"	6MM X 1/8"	45.97
GE08L 1/4"	6MM X 1/4"	40.54
GE08L 1/4"	8MM X 1/4"	41.58
GE10L 1/4"	10MM X 1/4"	59.36
GE10L 3/8"	10MM X 3/8"	59.36
GE12L 1/4"	12MM X 1/4"	74.05
GE12L 3/8"	12MM X 3/8"	70.54
GE12L 1/2"	12MM X 1/2"	76.72
GE15L 1/2"	15MM X 1/2"	97.52
GE18L 1/2"	18MM X 1/2"	136.00
GE22L 3/4"	22MM X 3/4"	182.38
GE28L 1	28MM X 1"	286.05
GE35L 1-1/4"	35MM X 1-1/4"	528.63
GE42L 1-1/2"	42MM X 1-1/2"	524.61
GE06S 1/4"	6MM X 1/4"	42.80
GE08S 1/4"	8MM X 1/4"	53.18
GE10S 1/4"	10MM X 1/4"	90.23
GE10S 3/8"	10MM X 3/8"	83.02
GE12S 1/4"	12MM X 1/4"	92.28
GE12S 3/8"	12MM X 3/8"	92.02
GE12S 1/2"	12MM X 1/2"	104.51
GE14S 1/2"	14MM X 1/2"	109.70
GE16S 1/2"	16MM X 1/2"	140.81
GE20S 3/4"	20MM X 3/4"	220.52
GE25S 1"	25MM X 1"	399.23
GE30S 1-1/4"	30MM X 1-1/4"	446.63
GE38S 1-1/2"	38MM X 1-1/2"	790.46
GE06LR-ED	6MM X 1/8"	32.91
GE08LR-ED	8MM X 1/4"	45.37
GE10LR-ED	10MM X 1/4"	65.00
GE12LR-ED	12MM X 3/8"	62.04
GE12LR-ED1/2"	12MM X 1/2"	108.24
GE15LR-ED	15MM X 1/2"	123.60
GE18LR-ED	18MM X 1/2"	124.28
GE22LR-ED	22MM X 3/4"	188.89
GE28LR-ED	28MM X 1"	318.14
GE35LR-ED	35MM X 1 1/4"	451.43
GE42LR-ED	42MM X 1 1/2"	508.09
GE06SR-ED	06MM X 1/4"	50.34
GE08SR-ED	08MM X 1/4"	89.02
GE10SR-ED	10MM X 3/8"	65.68
GE12SR-ED	12MM X 3/8"	63.71
GE16SR-ED	16MM X 1/2"	129.08
GE20SR-ED	20MM X 3/4"	230.58
GE25SR-ED	25MM X 1"	396.18
GE38SR-ED	38MM X 1 1/2"	683.88

CROSS COUPLING



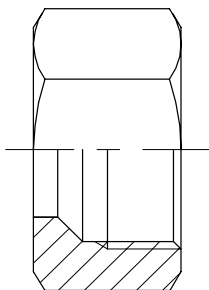
PART NO.	SIZE	SUGGESTED RETAIL
K06L	6MM	399.92
K08L	8MM	600.60
K10L	10MM	477.28
K12L	12MM	413.44
K22L	22MM	1726.21
K08S	8MM	703.70
K16S	16MM	1131.54
K20S	20MM	1322.17

STRAIGHT REDUCING COUPLING



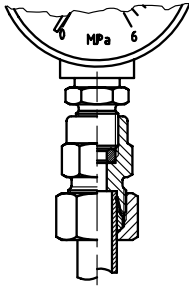
PART NO.	SIZE	SUGGESTED RETAIL
GR08/06L		220.41
GR10/06L		65.80
GR10/08L		131.01
GR12/06L		176.59
GR12/08L		134.09
GR12/10L		147.96
GR15/10L		207.05
GR15/12L		211.15
GR18/10L		280.05
GR18/12L		243.74
GR18/15L		147.61
GR22/15L		333.51
GR22/18L		288.22
GR28/18L		713.43
GR28/22L		719.03
GR35/22L		819.78
GR35/28L		770.98
GR08/06S		118.53
GR10/06S		162.47
GR10/08S		161.90
GR12/08S		228.60
GR12/10S		237.31
GR14/10S		124.98
GR14/12S		249.92
GR16/12S		289.82
GR16/14S		127.75
GR20/16S		396.41
GR25/16S		729.19
GR25/20S		712.84
GR30/20S		849.36
GR30/25S		941.41

NUTS



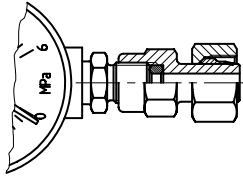
PART NO.	SIZE	SUGGESTED RETAIL
M06LL	6MM	9.71
M08LL	8MM	9.71
M06L	6MM	11.28
M08L	8MM	8.02
M10L	10MM	10.45
M12L	12MM	14.66
M15L	15MM	26.05
M18L	18MM	37.06
M22L	22MM	47.38
M28L	28MM	79.05
M35L	35MM	128.29
M42L	42MM	156.54
M06S	6MM	6.75
M08S	8MM	11.58
M10S	10MM	16.35
M12S	12MM	13.54
M14S	14MM	18.65
M16S	16MM	41.55
M20S	20MM	95.94
M25S	25MM	107.94
M30S	30MM	188.81
M38S	38MM	???

GAUGE COUPLING



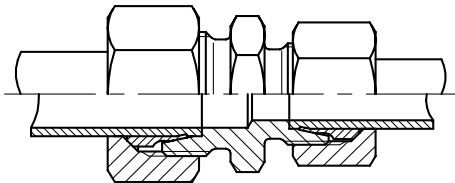
PART NO.	SIZE	SUGGESTED RETAIL
MAV06LR	6MM X 1/4"	91.82
MAV08LR	8MM X 1/4"	94.19
MAV10LR	10MM X 1/4"	120.24
MAV12LR	12MM X 1/4"	101.82
MAV06SR	6MM X 1/2"	152.06
MAV08SR	8MM X 1/2"	166.61
MAV10SR	10MM X 1/2"	177.71
MAV12SR	12MM X 1/2"	164.57

FEMALE GAUGE COUPLING



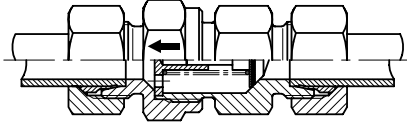
PART NO.	SIZE	SUGGESTED RETAIL
MAV-EV 06LR	6MM X 1/4"	120.82
MAV-EV 08LR	8MM X 1/4"	139.43
MAV-EV 12LR	12MM X 1/4"	136.79
MAV-EV 12SR	12MM X 1/4"	254.60

MALE / FEMALE REDUCER



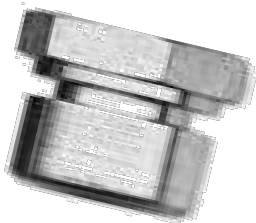
PART NO.	SIZE	SUGGESTED RETAIL
RED15/06L		60.78
RED15/08L		86.15
RED15/10L		104.67
RED15/12L		134.04
RED18/06L		226.15
RED18/08L		185.12
RED18/10L		130.32
RED18/12L		179.08
RED18/15L		193.78
RED22/10L		245.49
RED22/12L		199.77
RED22/15L		228.86
RED22/18L		248.48
RED28/08L		426.41
RED28/10L		395.07
RED28/12L		426.12
RED28/15L		259.42
RED28/18L		390.41
RED28/22L		678.44
RED35/15L		532.23
RED35/18L		405.47
RED35/22L		495.93
RED35/28L		
RED16/06S		256.40
RED16/08S		160.69
RED16/10S		171.12
RED16/12S		173.49
RED20/06S		320.57
RED20/08S		328.31
RED20/10S		253.58
RED20/12S		251.06
RED20/16S		200.11
RED25/10S		422.54
RED25/12S		408.83
RED25/16S		429.04
RED25/20S		447.99
RED30/10S		529.01
RED30/12S		345.10
RED30/16S		441.14
RED30/20S		537.02
RED30/25S		604.85
RED38/16S		575.55
RED38/20S		1067.50
RED38/25S		1092.87
RED38/30S		1170.42

NON RETURN VALVE



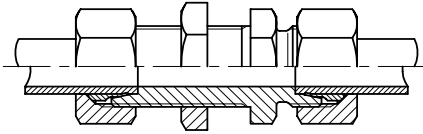
PART NO.	SIZE	SUGGESTED RETAIL
RHD06L	6MM	372.11
RHD08L	8MM	387.94
RHD10L	10MM	263.21
RHD12L	12MM	536.45
RHD15L	15MM	501.85
RHD18L	18MM	874.99
RHD22L	22MM	1241.86
RHD28L	28MM	1625.73
RHD35L	35MM	2833.37
RHD42L	42MM	3236.86
RHD06S	6MM	489.72
RHD08S	8MM	504.51
RHD10S	10MM	353.73
RHD12S	12MM	760.43
RHD16S	16MM	861.36
RHD20S	20MM	1390.40
RHD25S	25MM	1560.21
RHD30S	30MM	2476.96
RHD38S	38MM	1920.92

REDUCING THREAD MALE / FEMALE ADAPTOR



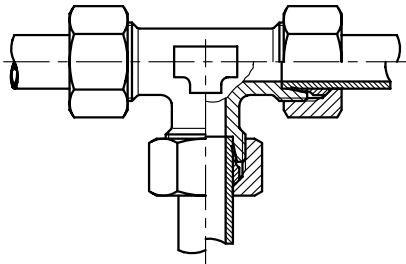
PART NO.	SIZE	SUGGESTED RETAIL
RI 1/8 X 1/4		56.33
RI 1/8 X 3/8		164.83
RI 1/4 X 1/8		41.31
RI 1/4 X 3/8		59.65
RI 1/4 X 1/2		91.21
RI 1/4 X 3/4		156.63
RI 3/8 X 1/8		66.90
RI 3/8 X 1/4		61.41
RI 3/8 X 1/2		81.88
RI 3/8 X 3/4		300.13
RI 1/2 X 1/8		76.21
RI 1/2 X 1/4		86.41
RI 1/2 X 3/8		70.44
RI 1/2 X 3/4		229.48
RI 1/2 X 1		240.74
RI 1/2 X 1 1/4		810.12
RI 3/4 X 1/4		91.94
RI 3/4 X 3/8		120.03
RI 3/4 X 1/2		99.22
RI 3/4 X 1		237.96
RI 3/4 X 1 1/4		587.01
RI 3/4 X 1 1/2		892.00
RI 1 X 1/4		184.15
RI 1 X 3/8		120.80
RI 1 X 1/2		207.02
RI 1 X 3/4		207.02
RI 1 X 1 1/4		920.12
RI 1 X 1 1/2		757.05
RI 1 1/4 X 3/4		324.61
RI 1 1/4 X 1/2		343.10
RI 1 1/4 X 1 1/2		974.67
RI 1 1/2 X 1/2		601.27
RI 1 1/2 X 3/4		420.52
RI 1 1/2 X 1		955.73
RI 1 1/2 X 1 1/4		619.78

STRAIGHT BULKHEAD



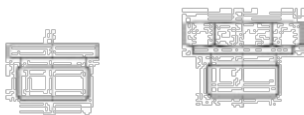
PART NO.	SIZE	SUGGESTED RETAIL
SV06L	6MM	121.35
SV08L	8MM	75.69
SV10L	10MM	103.78
SV12L	12MM	171.93
SV15L	15MM	185.29
SV18L	18MM	394.89
SV22L	22MM	459.91
SV28L	28MM	548.84
SV35L	35MM	875.29
SV42L	42MM	1362.41
SV06S	6MM	142.50
SV08S	8MM	182.11
SV10S	10MM	139.13
SV12S	12MM	246.72
SV14S	14MM	416.88
SV16S	16MM	392.60
SV20S	20MM	448.86
SV25S	25MM	721.87
SV30S	30MM	1133.13
SV38S	38MM	1415.09

EQUAL TEE



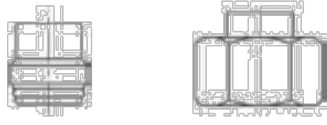
PART NO.	SIZE	SUGGESTED RETAIL
T06L	6MM	149.75
T08L	8MM	126.51
T10L	10MM	221.64
T12L	12MM	164.11
T15L	15MM	345.54
T18L	18MM	377.09
T22L	22MM	616.51
T28L	28MM	657.13
T35L	35MM	1370.48
T42L	42MM	1818.54
T06S	6MM	221.52
T08S	8MM	179.29
T10S	10MM	275.66
T12S	12MM	187.83
T14S	14MM	347.04
T16S	16MM	465.39
T20S	20MM	707.37
T25S	25MM	1101.09
T30S	30MM	1386.76
T38S	38MM	2035.82

LOCKING SCREW



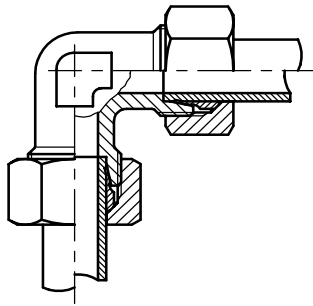
PART NO.	SIZE	SUGGESTED RETAIL
VSTI 10 X 1-ED		36.24
VSTI 12 X1.5-ED		47.20
VSTI 14 X1.5-ED		51.73
VSTI 16 X1.5-ED		81.51
VSTI 18 X 1.5-ED		57.21
VSTI 20 X 1.5-ED		82.79
VSTI 22 X 1.5-ED		171.12
VSTI 26 X 1.5-ED		243.62
VSTI 27 X 2-ED		102.86
VSTI 33 X 2-ED		179.26
VSTI 42 X 2-ED		196.79
VSTI 48 X 2-ED		266.09
VSTI 1/8"-ED		31.79
VSTI 1/4"-ED		42.65
VSTI 3/8"-ED		48.81
VSTI 1/2"-ED		69.79
VSTI 3/4"-ED		89.14
VSTI 1"-ED		165.72
VSTI 1 1/4"-ED		375.25
VSTI 1 1/2"-ED		508.89

BLANKING PLUG



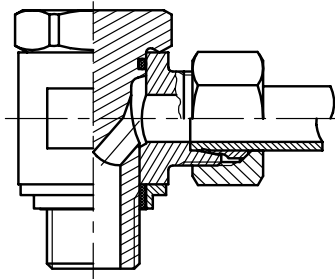
PART NO.	SIZE	SUGGESTED RETAIL
VKAM06L	6MM	26.60
VKAM08L	8MM	30.18
VKAM10L	10MM	32.51
VKAM12L	12MM	53.52
VKAM15L	15MM	59.42
VKAM18L	18MM	91.79
VKAM22L	22MM	118.60
VKAM28L	28MM	192.22
VKAM35L	35MM	348.94
VKAM42L	42MM	475.41
VKAM06S	6MM	28.45
VKAM08S	8MM	34.73
VKAM10S	10MM	36.36
VKAM12S	12MM	34.86
VKAM14S	14MM	68.49
VKAM16S	16MM	78.41
VKAM20S	20MM	124.28
VKAM25S	25MM	191.51
VKAM30S	30MM	367.33
VKAM38S	38MM	468.26

ELBOW COUPLING



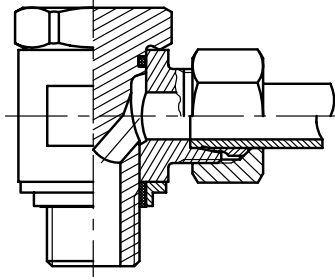
PART NO.	SIZE	SUGGESTED RETAIL
W06L	6MM	138.77
W08L	8MM	105.29
W10L	10MM	152.32
W12L	12MM	173.71
W15L	15MM	246.80
W18L	18MM	341.08
W22L	22MM	419.44
W28L	28MM	672.53
W35L	35MM	836.08
W42L	42MM	1071.35
W06S	6MM	67.92
W08S	8MM	198.90
W10S	10MM	224.62
W12S	12MM	229.17
W14S	14MM	242.82
W16S	16MM	306.61
W20S	20MM	474.75
W25S	25MM	772.49
W30S	30MM	936.27
W38S	38MM	1405.19

MALE STUD ELBOW



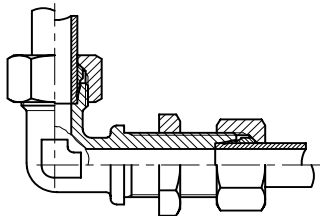
PART NO.	SIZE	SUGGESTED RETAIL
WHO06LR	6MM X 1/8"	249.35
WHO08LR	8MM X 1/4"	357.09
WHO10LR	10MM X 1/4"	362.22
WHO12LR	12MM X 3/8"	389.72
WHO15LR	15MM X 1/2"	337.88
WHO18LR	18MM X 1/2"	552.86
WHO22LR	22MM X 3/4"	852.36
WHO28LR	28MM X 1"	1542.71
WHO35LR	35MM X 1 1/4"	1442.32
WHO42LR	42MM X 1 1/2"	1059.08
WHO06SR	6MM X 1/4"	269.59
WHO08SR	8MM X 1/4"	309.98
WHO10SR	10MM X 3/8"	399.17
WHO12SR	12MM X 3/8"	375.36
WHO16SR	16MM X 1/2"	701.50
WHO20SR	20MM X 3/4"	716.31
WHO25SR	25MM X 1"	1376.52
WHO30SR	30MM X 1 1/4"	2250.31
WHO38SR	38MM X 1 1/2"	1933.85
WHO08LM	8MM X M12X1.5	281.35
WHO10LM	10MM X M14X1.5	251.16
WHO12LM	12MM X M16X1.5	386.41
WHO15LM	15MM X M22X1.5	307.65
WHO18LM	18MM	508.97
WHO16SM	16MM X M22X1.5	550.01
WHO20SM	20MM	348.21

MALE STUD ELBOW (cont.)



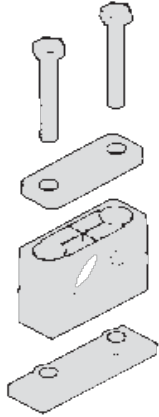
PART NO.	SIZE	SUGGESTED RETAIL
WE04LLR 1/8	4MM X 1/8"	91.20
WE06LLR 1/8	6MM X 1/8"	82.96
WE06LR 1/8	6MM X 1/8"	98.89
WE08LR 1/4	8MM X 1/4"	90.17
WE10LR 1/4	10MM X 1/4"	100.27
WE12LR 1/4	12MM X 1/4"	178.08
WE12LR 3/8	12MM X 3/8"	195.64
WE12LR 1/2	12MM X 1/2"	386.83
WE15LR 3/8	15MM X 3/8"	368.14
WE15LR 1/2	15MM X 1/2"	187.65
WE18LR 1/2	18MM X 1/2"	292.05
WE22LR 3/4	22MM X 3/4"	952.75
WE06SR 1/4	6MM X 1/4"	111.46
WE08SR 1/4	8MM X 1/4"	131.09
WE12SR 3/8	12MM X 3/8"	125.88
WE14SR 1/2	14MM X 1/2"	126.75
WE16SR 1/2	16MM X 1/2"	294.77
WE06LL 1/8 NPT	6MM X 1/8"	95.96
WE08LL 1/8	8MM X 1/8"	109.40
WE06L 1/8	6MM X 1/8"	108.92
WE06L 1/4	6MM X 1/4"	208.02
WE08L 1/4	8MM X 1/4"	104.58
WE10L 1/4	10MM X 1/4"	121.99
WE12L 1/4	12MM X 1/4"	221.50
WE12L 3/8	12MM X 3/8"	167.89
WE12L 1/2	12MM X 1/2"	202.99
WE15L 1/2	15MM X 1/2"	184.20
WE18L 1/2	18MM X 1/2"	350.36
WE22L 3/4	22MM X 3/4"	495.89
WE28L 1	28MM X 1"	798.68
WE35L 1 1/4	35MM X 1 1/4"	990.28
WE42L 1 1/2	42MM X 1 1/2"	1474.12
WE06S 1/4	6MM X 1/4"	170.88
WE08S 1/4	8MM X 1/4"	185.00
WE10S 3/8	10MM X 3/8"	153.64
WE12S 3/8	12MM X 3/8"	233.28
WE14S 1/2	14MM X 1/2"	404.28
WE16S 1/2	16MM X 1/2"	428.67
WE20S 3/4	20MM X 3/4"	558.28
WE25S 1	25MM X 1"	662.70
WE30S 1 1/4	30MM X 1 1/4"	1079.25
WE38S 1 1/2	38MM X 1 1/2"	1628.39

BULKHEAD ELBOW



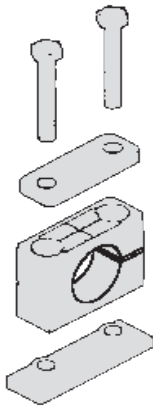
PART NO.	SIZE	SUGGESTED RETAIL
WSV06L	6MM	231.18
WSV08L	8MM	238.95
WSV10L	10MM	166.49
WSV12L	12MM	234.99
WSV15L	15MM	253.76
WSV18L	18MM	419.29
WSV22L	22MM	772.70
WSV28L	28MM	934.67
WSV35L	35MM	1417.43
WSV42L	42MM	1914.32
WSV06S	6MM	262.42
WSV08S	8MM	300.53
WSV10S	10MM	199.15
WSV12S	12MM	345.22
WSV14S	14MM	172.14
WSV16S	16MM	327.89
WSV20S	20MM	473.41
WSV25S	25MM	1294.90
WSV30S	30MM	1403.52
WSV38S	38MM	1568.15

LIGHT SERIES



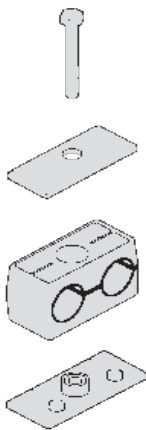
PART NO.	SIZE	SUGGESTED RETAIL
RSB-L 106	6MM	40.96
RSB-L 108	8MM	45.66
RSB-L 110	10MM	51.33
RSB-L 112	12MM	40.79
RSB-L 214	14MM	44.22
RSB-L 215	15MM	41.79
RSB-L 216	16MM	42.33
RSB-L 218	18MM	37.39
RSB-L 320	20MM	46.68
RSB-L 322	22MM	53.21
RSB-L 325	25MM	53.05
RSB-L 428	28MM	63.73
RSB-L 430	30MM	54.46
RSB-L 535	35MM	94.88
RSB-L 538	38MM	57.12
RSB-L 542	42MM	84.82

HEAVY SERIES



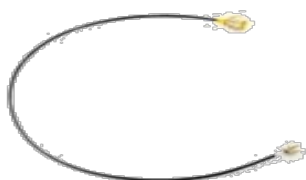
PART NO.	SIZE	SUGGESTED RETAIL
RSB-H 108	8MM	52.16
RSB-H 110	10MM	57.96
RSB-H 112	12MM	133.86
RSB-H 115	15MM	164.61
RSB-H 116	16MM	168.71
RSB-H 118	18MM	185.53
RSB-H 220	20MM	179.84
RSB-H 222	22MM	198.72
RSB-H 225	25MM	179.96
RSB-H 228	28MM	99.28
RSB-H 230	30MM	180.99
RSB-H 335	35MM	175.72
RSB-H 438	38MM	240.25
RSB-H 442	42MM	227.69

DOUBLE SERIES



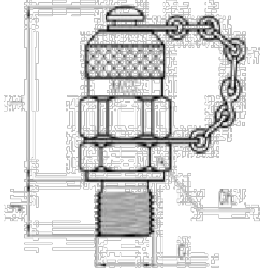
PART NO.	SIZE	SUGGESTED RETAIL
RSB-D 106	6MM	62.48
RSB-D 108	8MM	62.31
RSB-D 110	10MM	62.32
RSB-D 112	12MM	49.51
RSB-D 214	14MM	58.65
RSB-D 215	15MM	58.97
RSB-D 216	16MM	51.54
RSB-D 218	18MM	58.43
RSB-D 320	20MM	86.08
RSB-D 322	22MM	82.26
RSB-D 325	25MM	81.16
RSB-D 428	28MM	100.40
RSB-D 430	30MM	107.80

MINIMESS HOSE



PART NO.	SUGGESTED RETAIL
6400	76.66

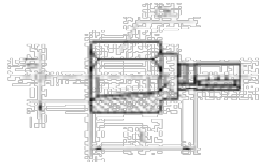
THREAD CHECK COUPLINGS - 620.01 SERIES



PART NO.	DESCRIPTION	SUGGESTED RETAIL
620.01.010.21	10 X 1 Metric Male incl Soft Seal	110.58
620.01.012.21	12 X 1.5 Metric Male incl Soft Seal	155.38
620.01.014.21	14 X 1.5 Metric Male incl Soft Seal	136.72
620.01.016.21	16 X 1.5 Metric Male incl Soft Seal	128.97
620.01.202.21	1/8" BSPP Male incl Soft Seal	304.95
620.01.204.21	1/4" BSPP Male incl Soft Seal	216.05
620.01.206.21	3/8" BSPP Male incl Soft Seal	417.59
620.01.302.31	1/8" NPT Male	305.72
620.01.304.31	1/4" NPT Male	343.88
620.01.306.31	3/8" NPT Male	417.77
620.02.012.61	CSHS/12L	122.18
620.02.015.61	CSHS/15L	153.01
620.02.112.61	CSHS/12S	225.53
620.02.116.61	CSHS/16S	281.66

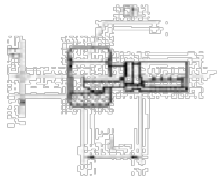
All test points supplied with steel cap

NPT FEMALE



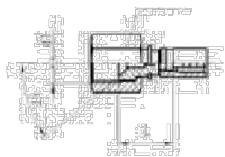
PART NO.	DESCRIPTION	SUGGESTED RETAIL
801.50.304.00	1/4 NPT Female Gauge Adaptor	373.03

BSP FEMALE



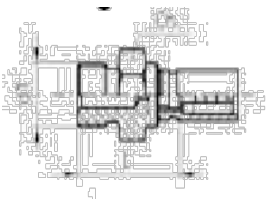
PART NO.	DESCRIPTION	SUGGESTED RETAIL
801.60.202.00	1/8" BSP Female Insert	185.91
801.60.204.00	1/4" BSP Female Insert	170.78

JIC FEMALE



PART NO.	DESCRIPTION	SUGGESTED RETAIL
801.60.404.00	7/16" UNF - JIC 37 Insert	83.87

BSP MALE



PART NO.	DESCRIPTION	SUGGESTED RETAIL
801.80.202.00	1/8" BSP Male Insert	194.06
801.80.204.00	1/4" BSP Male Insert	365.38



Quality,
environment, a complete range
of **products** and to always be
close to our customers,
are keywords to Hydros cand.

We'll connect you





Section Five

BALL VALVES

FILTERS

TEST POINTS

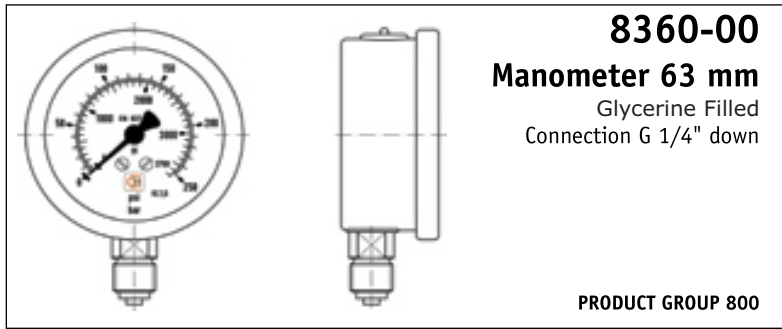
Accessories

Section Five

Accessories

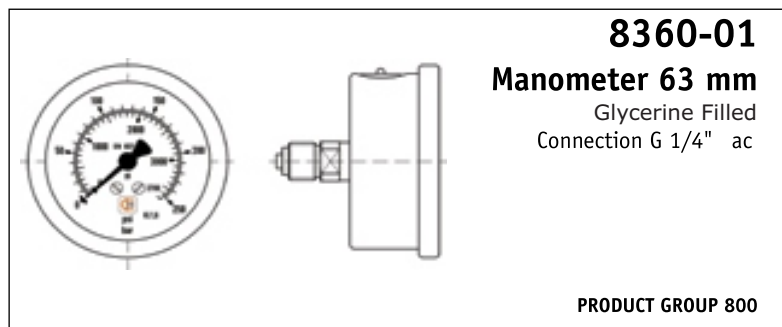
Description:-	Page:-
Gauges	70
2-way Ball Valves	71
Locking Device	71
2-way Low Pressure Seal	71
Hydraulic Oil	72
Thread tape	72
Cambuckle Strap	72
Hose Reel	72
Sets	73

8360-00 MANOMETER / GAUGES



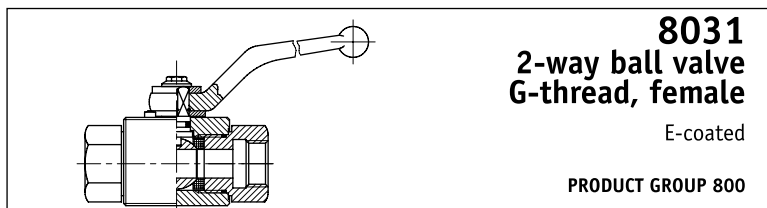
Part number	Pressure range bar	SUGGESTED RETAIL
8360 0001	10 bar	430.59
8360 0002	25 bar	447.74
8360 0004	40 bar	393.45
8360 0006	60 bar	388.86
8360 0010	100 bar	394.89
8360 0016	160 bar	400.89
8360 0025	250 bar	582.21
8360 0040	400 bar	385.04
8360 0060	600 bar	544.87

8360-01 MANOMETER / GAUGES



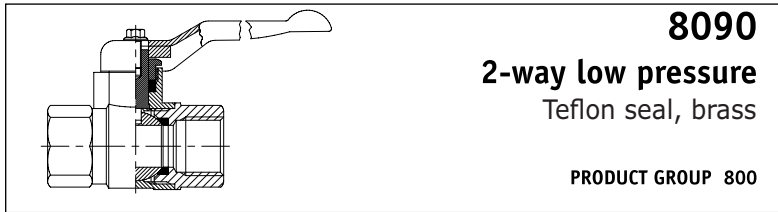
Part number	Pressure range bar	SUGGESTED RETAIL
8360 0102	25 bar	451.80
8360 0104	40 bar	668.06
8360 0116	160 bar	596.46
8360 0125	250 bar	450.40
8360 0140	400 bar	461.66

8031 2-way ball valve



Part number	Connection	DN	Work pr.	SUGGESTED RETAIL
8031-04-04	G 1/4" F	6	50,0 MPa	540.44
8031-06-06	G 3/8" F	10	50,0 MPa	577.86
8031-08-08	G 1/2" F	12	50,0 MPa	566.80
8031-12-12	G 3/4" F	20	40,0 MPa	766.18
8031-16-16	G 1" F	25	40,0 MPa	1357.85

8090 2-way low pressure



Part number	Connection	Work pr.	SUGGESTED RETAIL
8090-04-04	G 1/4" F	6,5 MPa	237.58
8090-06-06	G 3/8" F	6,5 MPa	192.83
8090-08-08	G 1/2" F	6,5 MPa	289.98
8090-12-12	G 3/4" F	4,0 MPa	649.34
8090-16-16	G 1" F	4,0 MPa	680.67
8090-20-20	G 1 1/4" F	4,0 MPa	1530.77
8090-24-24	G 1 1/2" F	4,0 MPa	1202.27
8090-32-32	G 2" F	4,0 MPa	1834.14

Hydraulic Oil



Part Number	Description	Packaging	SUGGESTED RETAIL
HYD OIL 46PERF20LT	Hydraulic Oil	20 ltr	1906.04
HYD OIL 46PERF210LT	Hydraulic Oil	210 ltr	17638.69
HYD OIL 68PERF5LT	Hydraulic Oil	5 ltr	539.35
HYD OIL 68PERF20LT	Hydraulic Oil	20 ltr	1925.63
HYD OIL 68PERF210LT	Hydraulic Oil	210 ltr	19210.84

Thread Tape



Part Number	Description	Length	Width	SUGGESTED RETAIL
5650-00-01	Thread Tape	1/2"	12m	23.14

Cambuckle Strap



Part Number	Description	Length	SUGGESTED RETAIL
5905-04-05	Cambuckle Strap	500mm	60.66
5905-04-07	Cambuckle Strap	750mm	75.15
5905-04-10	Cambuckle Strap	1000mm	84.72
5905-04-20	Cambuckle Strap	2000mm	82.35



HYDROSCAND
O-RINGS ORFS

- 1. O-ring 10x18x3
- 2. O-ring 12x18x3
- 3. O-ring 15x18x3
- 4. O-ring 20x18x3
- 5. O-ring 25x18x3
- 6. O-ring 30x18x3
- 7. O-ring 35x18x3
- 8. O-ring 40x18x3
- 9. O-ring 45x18x3
- 10. O-ring 50x18x3
- 11. O-ring 55x18x3
- 12. O-ring 60x18x3
- 13. O-ring 65x18x3
- 14. O-ring 70x18x3
- 15. O-ring 75x18x3
- 16. O-ring 80x18x3
- 17. O-ring 85x18x3
- 18. O-ring 90x18x3
- 19. O-ring 95x18x3
- 20. O-ring 100x18x3

R766.08
 PRODUCT GROUP 505




5611-00-01
O-ring set, inch

R483.00
 PRODUCT GROUP 505



5611-00-02
O-ring set, metric

R483.00
 PRODUCT GROUP 505



HYDROSCAND
COPPER WASHERS
 10 - 28 mm

- 1. Kuvansiirritin 10 x 17 mm
- 2. Kuvansiirritin 12 x 17 mm
- 3. Kuvansiirritin 15 x 17 mm
- 4. Kuvansiirritin 20 x 17 mm
- 5. Kuvansiirritin 25 x 17 mm
- 6. Kuvansiirritin 30 x 17 mm
- 7. Kuvansiirritin 35 x 17 mm
- 8. Kuvansiirritin 40 x 17 mm
- 9. Kuvansiirritin 45 x 17 mm
- 10. Kuvansiirritin 50 x 17 mm
- 11. Kuvansiirritin 55 x 17 mm
- 12. Kuvansiirritin 60 x 17 mm
- 13. Kuvansiirritin 65 x 17 mm
- 14. Kuvansiirritin 70 x 17 mm
- 15. Kuvansiirritin 75 x 17 mm
- 16. Kuvansiirritin 80 x 17 mm
- 17. Kuvansiirritin 85 x 17 mm
- 18. Kuvansiirritin 90 x 17 mm
- 19. Kuvansiirritin 95 x 17 mm
- 20. Kuvansiirritin 100 x 17 mm

5620-00-01
Assortment box
 Copper plate

R1987.59
 PRODUCT GROUP 505

5601-00-02
Assortment box
Rubber steel washer
IMPERIAL

R1563.75
PRODUCT GROUP 505

5601-00-03
Assortment box
Rubber steel washer
METRIC

R2259.52
PRODUCT GROUP 505

